

www.SteelMarketplace.com

JANUARY 2023 • Vol. 30 No. 01



STEEL[®]



MARKETPLACE
CONNECTING BUYERS & SELLERS IN THE FABRICATION AND METAL WORKING INDUSTRY



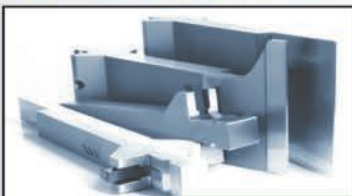
HYBRID POWER
Introducing the iBend H Series
Up to 50% more energy efficient
20% faster



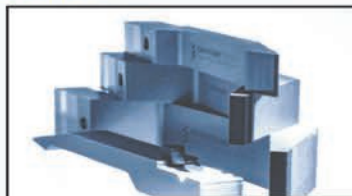
877-242-9706
mvdcanada.com

EUROSTAMP TOOLING
the Italian excellence

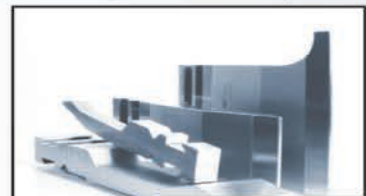
Precision tooling at excellent prices



Trumpf style



Wila style



Bystronic style

Westway Machinery Ltd.

for premium products
outstanding service for
over 45 years.

Press Brakes



Multi-Bend Center



Laser Cutters



Tube Benders



Band Saws



Sanding & Deburring



Waterjet Cutters



Plate Rolls



Plate Shears



Call Today!



WESTWAY MACHINERY LTD.

TOLL FREE: 800.263.1199

WestwayMachinery.com





Bottleneck?



Breakthrough.

Is lack of manpower and technology causing a bottleneck in your workflow?

The **ASTES HS Skyway** is a fully automated solution with the fastest cutting, sorting, and stacking while maintaining accuracy throughout the entire process.



NEW!

Patented, integrated tool changer head with 6 tools. Out of Center Tools for heavy parts with an odd center of mass. High precision even at high speeds!



Scan to learn more

ASTES⁴

MITSUBISHI LASER

For an in-person or virtual demo, visit mcmachinery.com or call 630-616-5920.



**FERRIC
MACHINERY**



10 Natura Way Cambridge, ON N3C 0G7

**HIGH QUALITY
MACHINES | SERVICE | PARTS**

JÖRG

Coil Fed Laser Cutter

EFFICIENT NESTING

Minimize wasted material.

UP TO 14G CAPACITY

Mild, aluminum, galvanized & stainless.

SINGLE OR MULTI-COIL

Automatic feeding.

MATERIAL WIDTH

41", 48" or 60".

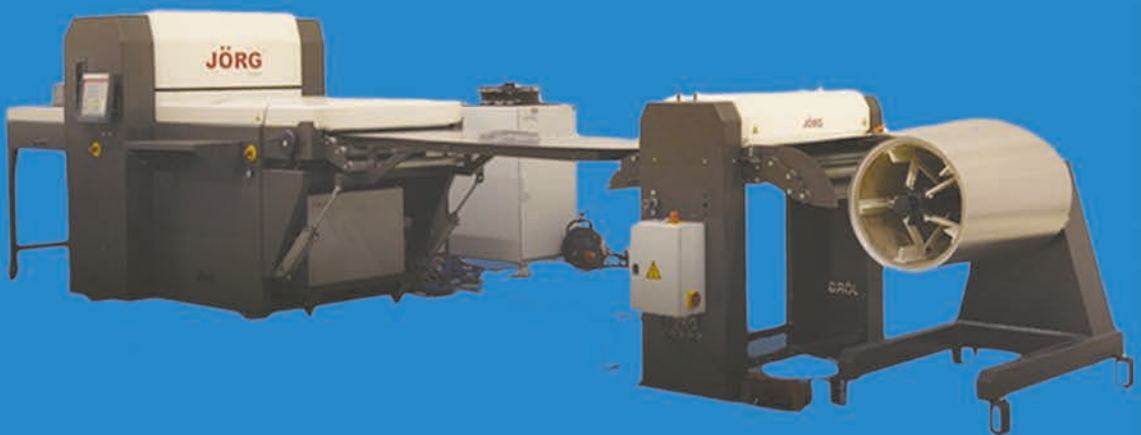
COMPACT SETUP

Minimum floor space.

IPG FIBER LASER

Faster, less energy, less maintenance.

WWW.FERRICMACHINERY.COM Toll-Free (877) 337-7424 Local (519) 220-1429



STEVENS MACHINERY
Sales Inc.

26 Airview Road, Unit #A, Etobicoke (Toronto) ON., M9W 4P2
Ph: 416-798-3611 - TF: 1-866-798-3611 - Email: andrew@stevensmachine.com
www.stevensmachine.com

START 2023 WITH THE RIGHT MACHINE



Models & Capacities: From 3 Axis to 7 Axis



G - SERIES
80" X 67 TON
To 160" x 165 TON



BULL SERIES
52" X 110 TON or 64" x 160 TON



C - SERIES
34" X 25 TON
To 64" x 50 TON

SERVO-MOTOR BALL SCREW - LOWER OPERATING COSTS - ECOLOGICALLY FRIENDLY - MADE IN FINLAND - SOLD WORLDWIDE

AIR COMPRESSORS

10 Hp, 80 Gallon Horizontal Tank, Two Stage Piston Vee Head, 550 Volt
15 HP, 120 Gallon Horizontal Tank, Two Stage Piston Vee Head, 550 Volt

BRAKES, MANUAL

8 Ft x 18 Gauge, TENNSMITH, Hand Brake, Made In USA - Ready To Go!
10 Ft x 16 Gauge, NATIONAL, New Hand Brake, 100% USA MADE

COIL HANDLING & FEEDING

UNCOILER - DURANT, 600 Lb, Manual, 10" Wide x 44" OD, 3 Keeper Arms, Manual Expansion
UNCOILER - Littell Double Sided, 300 Lbs Each Side, 6.5" Wide x 46" OD, Manual, Keeper Arms
UNCOILER - Littell, 600 Lb Capacity, 10" Width x 44" OD Coil, Keeper Arms, 110 Volt Motor
UNCOILER - LITTELL, 1400 Lb Capacity, 7-1/2" Width, 34" OD, Keeper Arms, 208/230/460 Volt Motor
UNCOILER - COLT, 2,500 Lbs x 10" Wide x 40" OD Coil, Keeper Arms, 1 Hp DC Motor, Variable Speed, 110 V
UNCOILER - AMERICAN STEEL, 2,500 Lbs x 18" Wide x 48" OD Coil, Keeper Arms, Drag Brake, Manual
UNCOILER - K. VOGEL, 2,500 Lbs x 18" Wide x 48" OD Coil, Keeper Arms, 1 Hp DC Motor, Var Speed, 550 Volt

DEBURRING & FINISHING MACHINES

BURRMASTER, Tube End Deburring Machines, Single & Double End, High Speed, NEW & USED
CEMCO, Deburring Machine, 3" Wide, Dry, Scotchbrite Drum, Smooths Edges and Surface, Like New, 575V
DOWNDRAFT TABLE, 3' X 6', SOURCECETEC, SCT-36, 4,252 cfm, steel grates, water trays, 7.5 hp, 575 Volt
WEBER DEBURRING MACHINES - NEW - THE BEST MACHINES AND FINISH YOU CAN BUY!

DRILLS

BUFFALO Floor Model Drill, # 15, 1/2" Drill Chuck, 11" x 11" Table, 1/2 Hp Motor, 110 Volt
AMCO, Geared-Head, # 3 MT, Floor Model, High/Low Speeds to 3,480 rpm, 3/4" & 1 Hp, 600 Volt
BUFFALO Floor Model Drill, # 18, # 3 MT, 1" Capacity, 14" x 14" Table, 1.5 Hp, 550 Volt
ERLO Geared-Head, # 3 MT, TC-30, 1-3/16" Capacity, 16.5" x 15.75" Table, 2 Hp, 575 Volt
SOLBERGA Geared-Head, # 4 MT, 5/8" Chuck & Arbor, Power Down Feed, 2 Speed Motor, 550 Volt

GRINDERS

MAGNETIC CHUCKS - 6" X 12", 8" X 24", 15-3/4 OD - COME AND HAVE A LOOK!!
6" x 18" - CHEVALIER, Manual Feeds, 19" Long, 7" Cross, Dust Collector Unit, 2 Hp, 575 Volt
6" x 18" - EQUIPTOP, Manual Feeds, 19" Long. & 7" Cross Travel, 1-1/2 Hp, 575 Volt
6" x 78" - HM, Model TAS 150, Angle, Belt, 5HP, 550V

SHEET METAL EQUIPMENT

20 GAUGE LOCKFORMER SPEEDNOTCH, 4 HEAD, 60 INCH LENGTH, 1 HP 110 VOLT

NOTCHERS

STRIPPIT - 5" x 5" x 10 Gauge Corner Notching Die, Front Table & Guides (2)
PIERCE-ALL - 3" x 3" x 10 Gauge Corner Notching Die
1/4" x 9" x 9" APOLLO, Model TV 250/6 Hydraulic, Variable Angle, 5 Hp, 600 V, Elect. Foot Pedal

MILLING MACHINES

9" X 49" - BEMATO, Turret, R8, 2 Axis DRO, Variable Speed, Manual Feeds, 3 Hp Motor, 575 Volt
9" x 42" - FIRST, Turret, R8, Variable Speed, Reversible, Manual Feeds, 2 Hp, 575 Volt
IRM ROLLING MILL - 2 High x 6" Wide, Uncoiler/Recoiler, Vari-Speed, New 2000, 7.5 Hp, 230/60/3 Volt

PRESSES

DIE SHOES For Presses - Different Sizes In Stock - COME AND HAVE A LOOK!!
1/2 ton - EMG (NEW), Manual Impact Press, 1" Stroke, 0.008" Impact Stroke
1-1/2 ton - EMG (NEW), Manual Toggle Press, 2.4" Stroke, 9.85" Shut Height
2 ton - ALVA ALLEN, OBI, 3/4" St, Mechanical, Bench Model, Hand Trip, 1/4 Hp, 110 Volt
2 ton - AZIMUTH, OBI, Bench Model, 1" St, 4-5/8" SH, Mechanical, 1/3 Hp, 110 Volt

PRESSES

3 ton - MANUAL ARBOR PRESS, 5-1/2" Throat, 12-1/2" Open Height, On Stand
4 ton - ALCECO, OBI, 1-1/4" St, 5-3/4" SH, 1/3 Hp, Mounted on Steel Bench, 550 Volt
4 ton - ALCECO, OBI, 4-8DT, 8" Throat, 1-1/4" St, Mech Clutch, 1/3 Hp, 208/230/460 Volt
4 ton - AZIMUTH, OBI, 4-DT12, 12" Throat, 1-1/4" St, 5-3/4" SH, 1/3 Hp, 110 Volt
5 ton - WHITNEY JENSEN, Kick Press, 24" Deep Throat, Floor Model
8 ton - ALVA ALLEN, OBI, 1-1/2" St, 7" SH, Mech Clutch, Floor Standing, 1/2 Hp, 110 Volt
8 ton - ALVA ALLEN, OBI, 2-3/4" St, 8-3/4" SH, 10" Deep Throat, Floor Standing, 3/4 Hp, 550 Volt
8 ton - ALCECO, OBI, 1-1/2" St, 6" SH, Mech Clutch, Mounted On Steel Bench, 1 Hp, 550 Volt
10 ton - ROUSSELLE, OBI, 2" St, 6.5" SH, Mech. Clutch, 1/2 Hp, 110/220 Volt
12 ton - ALVA ALLEN, OBI, 1-3/4" St, 8" SH, Mech Clutch, - 3/4 Hp, 550 Volt
15 ton - ROUSSELLE, OBI, 2" St, 7-3/4" SH, Mechanical Clutch, 1 Hp, 550 Volt
20 ton - BLOW, OBI, 2" St, 7-3/4" SH, Mech. Clutch, 1 Hp, 550 Volt
20 ton - BROWN BOGGS, 2" Stroke, 11" x 20" Bed, Mechanical Clutch, 1-1/2 Hp, 550 Volt
20 ton - NIAGARA, OBI, 2" St, 8-3/4" SH, Air Act. Mech Clutch, Palms, Foot Pedal
25 ton - YOSHINO, PIERCING, 1/4" Stroke, Air Clutch, 575 Volt, Palms, Safety Control
28 ton - BROWN BOGGS, OBI, 2-1/2" St, 6-3/4" SH, Air Act Mech Clutch, 2 Hp, 550 Volt
30 ton - BROWN BOGGS, OBI, 2-1/2" St, 9" SH Over Bed, Mechanical Clutch, 2 Hp, 550 Volt
30 ton - BROWN BOGGS, OBI, 2-1/2" St, 6-3/4" SH, Air Act Mech Clutch, 2 Hp, 550 Volt
30 ton - BROWN BOGGS, OBI, 6" St, 9-3/4" SH, Air Act Mech Clutch, 3 Hp, 550 Volt
44 ton - ALCECO, OBI, 3" St, 10" SH, 28" x 18" Bed, Mech. Clutch, 3 Hp, 550 Volt

PRESS BRAKES

ELECTRIC CNC PRESS BRAKES (NEW) - COASTONE (MADE IN FINLAND SINCE 2004),
2 D GRAPHIC CONTROLS, 34" X 25 TON TO 13 FT X 165 TON, 3 AXIS TO 7 AXIS, LASER GUARDS,
SERVO DRIVE BALL SCREWS TO RAM WITH ENCODERS, CNC RAM CROWNING (STANDARD ON
ALL MACHINES OVER 6 FT, 550 VOLT, PSR READY, TRAINING & INSTALLATION
12 Ft Bottom Die Holder, 2-1/2" H x 3" W x 1/2" Top Slot, Grub Screws Every 10" 3/4" H x 1/2" W Tang on Bottom

PUNCHING MACHINES

UNIPUNCH & STRIPPIT "C" PUNCHES - All Sizes - Over 100 - boxes of punches & dies - all sizes
CLINCHING TOOL, NORLOK, Flange Watson, Portable, Air/Oil Booster Unit, 2 Pieces of 14 Gauge, 110 Volt
8 ton - ROTEX, Manual Turret Punch, #18C-2.25, 18 Stations, 26" Throat, All Punches & Dies, Great For Sheet Metal Shop!

SAND BLAST CABINETS

EMPIRE, PF-3648 SRB-4, 2 Gloves, Gun, Lights, 1 Hp, 110 Volt

SAWS

Band Saw, Vertical, KBC, 18" Throat, Blade Welder, Var. Speeds, 23" x 17" Table, 2 Hp, 220/60/1 Volt
Cold Saw, DELTA, 12" Blade, Steel & Aluminium, Drip Coolant, 48" Infeed/Outfeed Extensions, 5 Hp Motor, 575 Volt
Cold Saw, SCOTCHMAN, 12" Blade, Straight Cut, High/Low Speeds, Pneu. Infeed, Pneu. Vise, Pneu. Head
PISTORIUS - Double Mitre Saw, 2 x 10" Blades, Pneu. Foot Pedal, 110/220 Volt
Radial Arm Saw, DEWALT, 18" Carbide Tipped Blade, 26" Travel, 5 Hp Motor, 575 Volt

shears

16 ga. X 50" - EDWARDS, Pneumatic Shear, Pneumatic Foot Pedal, Pneumatic Hold Downs
16 ga. x 72" - NIAGARA, Mechanical Shear, Mechanical Foot Pedal, 5 Hp, 575 Volt
14 ga. x 52" - SAMPSON, Hydraulic, 40 SPM, Single/Continuous, Electric Foot Pedal, 3 Hp, 550 Volt
1/4" x 12 Ft - WYSONG, Hydraulic, 36" CNC Back Gauge, Sq. Arm, Two Support Arms, 20 Hp, 550 Volt - SPECIAL PRICE!

WELDERS

275 AMP, LINCOLN, TIG & STICK WELDER Plug, Cables, Microstart, Sq. Wave, 575/11/60 Volt
25 KVA, WELDOMATIC, Spot Welder, 18" Throat, Weltron Decade 5 Control, Air Foot Pedal, 550 Volt
18 KVA, REX, Spot Welder, 14" Arms, Water Cooled Tips, Mech. Treadle, 550 Volt
15 KVA, WELDOMATIC, Spot Welder, 7-1/2" Arms, Water Cooled Tips, Mech. Treadle, 550 Volt
10 KVA, WELDOMATIC, Spot Welder, 12" Arms, Water Cooled Tips, Mech. Treadle, 550 Volt
Wirefeeder, FRONIUS, VRI500, Robotic, 4 Roller Drive, Digital Controlled For 3 rd Axis, New

Tri-County
Saw Services Inc.
Band saw repair specialists

We service all makes and models of band saws and metal cutting machinery used by metal fabricators, steel manufacturers and machine shops across southern Ontario.

Services

- Emergency repairs
- Preventative maintenance
- 20-point machine inspection
- PLC software upgrades
- Operator and safety training
- Full Service Now Available In GTA

We also provide

- High performance band saw blades
- Custom-sized, welded band saw blades
- Machine coolant and lubricants
- Pre-fabricated and custom machine parts
- In stock or custom conveyors

Machinery Serviced

- Horizontal and vertical band saws
- Cold saws and Iron workers
 (makes include: Hyd-Mech, DoAll, Kasto, Cosen, Behringer, Marvel, Bomar, Amada, Hem Saw)

Phone: 519-897-7292

Fax: 519-265-9331

office@ontariosawservice.com

www.ontariosawservice.com

MACHINERY

BRAKES MANUAL

4' x 22 ga.	TENNSMITH, Bench Brake, new, stock	Call	Mississauga	Westway	905 803 9999
4' x 22 ga.	TENNSMITH, Box and Pan Brake - new, stock	Call	Mississauga	Westway	905 803 9999
4' x 16 ga.	TENNSMITH, Bench Brake - new, stock	Call	Mississauga	Westway	905 803 9999
4' x 16 ga.	TENNSMITH, Box & Pan Brake, - new, stock	Call	Mississauga	Westway	905 803 9999
4' x 12 ga.	TENNSMITH, Box & Pan Brake, - new, stock	Call	Mississauga	Westway	905 803 9999
4' x 16 ga.	EMPRO Heavy Duty Box & Pan Brake, 4FT & 8 FT X 12GA	Call	Winnipeg	Empire Machinery	800 665 8089
6' x 16 ga.	TENNSMITH, Box and Pan Brake, new, stock	Call	Mississauga	Westway	905 803 9999
6' x 12 ga.	SAMPSON, Box & Pan Brake, 1 D612U, new, stock	Call	Mississauga	Westway	905 803 9999
8' x 18 ga.	TENNSMITH - Apron Brake, new, stock	Call	Mississauga	Westway	905 803 9999
8' x 18 ga.	TENNSMITH, Hand Brake, Made In USA - Ready To Go!	Call	Toronto	Stevens Machinery	866 798 3611
8' x 16 ga.	TENNSMITH - Apron Brake, new, stock	Call	Mississauga	Westway	905 803 9999
8' x 16 ga.	TENNSMITH 9716 Handbrake	Call	Winnipeg	Empire Machinery	800 665 8089
8' x 16 ga.	TIN KNOCKER, TK 816 Handbrake	Call	Winnipeg	Empire Machinery	800 665 8089
8' x 12 ga.	SAMPSON, Apron Brake, - new, stock	Call	Mississauga	Westway	905 803 9999
8' x 12 ga.	SAMPSON, Hydraulic, Box & Pan Brake, New	Call	Mississauga	Westway	905 803 9999
10' x 18 ga.	TENNSMITH, Apron Brake, New, stock	Call	Mississauga	Westway	905 803 9999
10' x 16 ga.	TIN KNOCKER, TK1016 Handbrake	Call	Winnipeg	Empire Machinery	800 665 8089
10' x 16 ga.	JOUANEL, - CNC Folder	Call	Winnipeg	Empire Machinery	800 665 8089
10' x 16 ga.	TENNSMITH - Floor Model Brakes	Call	Winnipeg	Empire Machinery	800 665 8089
10' x 16 ga.	TENNSMITH, Apron Brake, New, Stock	Call	Mississauga	Westway	905 803 9999
10' x 16 ga.	NATIONAL, New Hand Brake, 100% USA MADE -	Call	Toronto	Stevens Machinery	866 798 3611
10' x 16 ga.	TIN KNOCKER Floor Model Brakes	Call	Winnipeg	Empire Machinery	800 665 8089
10' x 14 ga.	SAMPSON, Hydraulic Box & Pan, In Stock, New	Call	Mississauga	Westway	905 803 9999
10' x 14 ga.	EMPRO Model V-1014-6, Manual Box & Pan Brake	Call	Winnipeg	Empire Machinery	800 665 8089
10' x 14 ga.	BAILEIGH, Pre-owned BR1201H, Hydraulic, Box & Pan Brake	Call	Winnipeg	Empire Machinery	800 665 8089
10' x 14 ga.	CIDAN, Pre-owned, CNC Folder - Model PFP101	Call	Winnipeg	Empire Machinery	800 665 8089

COIL HANDLING & FEEDING

UNCOLLER	DURANT, 600 Lb, Manual, 10" Wide x 44" OD, 3 Keeper Arms, Manual Expansion	Call	Toronto	Stevens Machinery	866 798 3611
UNCOLLER	Littell Double Sided Stock Reel, 300 Lbs Each Side, 6.5" Wide x 46" OD, Manual, Keeper Arms	Call	Toronto	Stevens Machinery	866 798 3611
UNCOLLER	Littell 600 Lb Capacity, 10" Width x 44" OD, Coil, Keeper Arms, 110 Volt Motor	Call	Toronto	Stevens Machinery	866 798 3611
UNCOLLER	LITTELL, 1400 Lb Capacity, 7-1/2" Width, 34" OD, Keeper Arms, 208/230/460 Volt Motor	Call	Toronto	Stevens Machinery	866 798 3611
UNCOLLER	COIL, 2,500 lbs x 10" Wide x 40" OD, Coil, Keeper Arms, 1 hp DC Motor, Variable Speed, 110 V	Call	Toronto	Stevens Machinery	866 798 3611
UNCOLLER	AMERICAN STEEL, 2,500 lbs x 18" Wide x 48" OD, Coil, Keeper Arms, Over Brake, Manual	Call	Toronto	Stevens Machinery	866 798 3611
UNCOLLER	K, Model 2111-13-00, Single Head, w/et, 2005, Pre-owned	Call	Mississauga	Westway	905 803 9999
CSABLE STRAIGHTENER	COOPER WEYMOUTH, A/C, 15,000 lbs, 62" OD, x 18" W, 7 Roll, 15Hp, 230/460V	Call	Toronto	Stevens Machinery	866 798 3611
Rapid Air	Feeds in Stock, RAPIDAIR, 2" - 8" wide, New	Call	Mississauga	Westway	905 803 9999
MECON	Servo feed/straightener, 48" wide, pre-owned	Call	Mississauga	Westway	905 803 9999
COE	42" Power Straightener, Pre-Owned	Call	Mississauga	Westway	905 803 9999
MECON	42" x 20,000 Lb, Coil Reel, motorized, Hydraulic Expansion, Coil Guard, Over arm, Pre-owned	Call	Mississauga	Westway	905 803 9999
48-60" Duct	IPI Pro-Ductomatic, Front-End Coil Line	Call	Winnipeg	Empire Machinery	800 665 8089

DEBURRING & FINISHING MACHINES

BURFMASTER	Tube End Deburring Machines, Single & Double End, High Speed, NEW & USED	Call	Toronto	Stevens Machinery	866 798 3611
CEMCO	Deburring Machine 37" Wide, Dry, Softizable Drum, Smooths Edges & Surface, Like New 575V	Call	Toronto	Stevens Machinery	866 798 3611
DOWNDRAFT TABLE	3' x 6', SOURCE-TEC, SC-1-36, 4,262 cfm, steel grates, water trays, 7.5 hp, 575 Volt	Call	Toronto	Stevens Machinery	866 798 3611
WEBER	DEBURRING MACHINES - NEW - THE BEST MACHINES AND FINISH YOU CAN BUY!	Call	Toronto	Stevens Machinery	866 798 3611
SODO	Tube End Chamfering, 4" cap, new, stock	Call	Mississauga	Westway	905 803 9999
TIMESAVER	37" Model 2111-13-00, Single head, w/et, 2005, Pre-owned	Call	Mississauga	Westway	905 803 9999
APEX	37" FZ, Sander, IN STOCK	Call	Winnipeg	Empire Machinery	800 665 8089
APEX	25" 1000 Series Wide Deburring Machine	Call	Winnipeg	Empire Machinery	800 665 8089

DRILLS & GRINDERS

BUFFALO	Floor Model Drill, # 15, 1/2" Drill Chuck, 11" x 11" Table, 1/2 Hp Motor, 110 Volt	Call	Toronto	Stevens Machinery	866 798 3611
AMCO	Geared-Head, # 3 MT, Floor Model, High/Low Speeds to 3,480 rpm, 3/4 & 1 Hp, 600 Volt	Call	Toronto	Stevens Machinery	866 798 3611
BUFFALO	Floor Model Drill, # 18, # 3 MT, 1" Capacity, 14" x 14" Table, 1.5 Hp, 550 Volt	Call	Toronto	Stevens Machinery	866 798 3611
ERLO	Geared-Head, # 4 MT, 1 1/2" Capacity, 16.5" x 15.75" Table, 2 Hp, 575 Volt	Call	Toronto	Stevens Machinery	866 798 3611
SOLBERGA	Geared-Head, # 4 MT, 5/8" Chuck & Arbor, Power Down Feed, 2 Speed Motor, 550 V	Call	Toronto	Stevens Machinery	866 798 3611
MAGNETIC CHUCKS	6" X 12", 8" X 24", 15-3/4 OD - COME AND HAVE A LOOK!!	Call	Toronto	Stevens Machinery	866 798 3611
6" x 18"	CHEVALIER, Manual Feeds, 19" Long, 7" Cross, Dust Collector Unit, 2 Hp, 575 Volt	Call	Toronto	Stevens Machinery	866 798 3611
6" x 18"	EQUIPTOP, Manual Feeds, 19" Long, 8" Cross, Travel, 1-1/2 Hp, 575 Volt	Call	Toronto	Stevens Machinery	866 798 3611
6" x 78"	HM, Model TAS 150, Angle, Belt, SHP, 550V	Call	Mississauga	Westway	905 803 9999
CHEVALIER	Pre-Owned Model FSG-1020AD Programmable Surface Grinder	Call	Winnipeg	Empire Machinery	800 665 8089

CHOOSING A PLASMA SYSTEM IS JUST ONE PHONE CALL AWAY!

AKS accu-kut:

The "cornerstone" machine of your fab shop!

The AKS accu-kut is a heavy-duty machine, utilizing a one-piece frame, with numerous options and a user friendly Hypertherm Edge controller.



**Plate Cutting - Sheet Metal - Contour Cutting - Bevel Cutting
- Part Nesting - HSS Tube & Pipe Cutting - I-Beams***

- **Need a "Do-it-all" plasma machine in your shop?**
- **Want an advantage over your competition?**
- **Looking for accurate, quality parts with maximum uptime?**

Get the AKS accu-kut Plasma System and improve your production uptime, as well as maximize your companies money making opportunities.

Contact Us For More Info

fms@fmSCANADA.ca

Quality Service, Support & Consumables

1.866.995.9910

FMS Fabricating
Machinery
Solutions Inc. +

www.fmsCANADA.ca



MODERN TOOL LTD

Machine Tools and Fabrication Equipment since 1960



BRAKE PRESSES SHEARS LASERS PLASMAS PLATE ROLLS IRONWORKERS CNC MILLING MACHINES BORING MILLS SAWS CNC LATHES & MANUAL LATHES GRINDERS ROLL BENDERS PORTABLE MACHINE TOOLS TUBE & PIPE BENDERS

NUKON[®] fiber Laser cutting machines



Compact Size
Energy Efficient
High Speed
Precise Work



- > Standard working table dimensions: 1500 x 3000mm
- > Laser power source: 1kW / 2kW / 3kW / 4kW
- > Very fast direct exchange of the cutting table (without lifting the table)
- > Low energy consumption: 16kVA / 24kVA / 28kVA / 32kVA



2D Laser Cutting
High Performance
High Productivity



- > Table dimensions: 1530 x 3050mm to 2030 x 6050mm
- > Laser power source: 4kW / 6kW / 8kW / 10kW / 12kW / 15kW
- > Low energy consumption: 32kVA / 48kVA / 65kVA / 85kVA / 105kVA / 125kVA
- > Speed, Sensibility, Reliability and Low Operating Cost
- > Optional Auto Nozzle Changer, Load/Unload System



Rotary Cutting
Innovative Solution
High Speed
Precise Work



- > Standard working table dimensions: 1500 x 3000mm
- > Laser power source: 2kW / 3kW / 4kW / 6kW
- > Fast hydraulic table exchange
- > Low energy consumption: 24kVA / 28kVA / 32kVA / 48kVA
- > High speed and cutting capacity
- > Rotary module for pipe cutting available

"Race with SPEED, for SUCCESS"

ACCURL[®]

Shaping your future

ACCURL MAX-WJ-2515L CNC WATER JET CUTTING MACHINE, 8' X 4' CAPACITY

Ideal For Cutting of Thin Sheet Materials, Glass, Granite, Leather, Marble, Plastic and Stone.

- > HIWIN Linear Guide and Ballscrews
 - > Acceleration Speed: X & Y Axis for 0~20M/MIN
 - > ESA Servo Driver & Motor With Bus Control
 - > Energy Efficient Greatly Reduced Power Consumption
 - > Advanced Hypertherm Dialine Cutting Head Assembly 3 Axis Only
 - > PLC Connect (Programmable Logic Controller)
 - > Integrated Sensor THC and BEVEL
- The ACCURL WATERJET MACHINE Is Controlled With An ESA (Made In Europe) S660 Series CNC Control Unit Which Provides Unprecedented Control Of The Cutting Process.



ACCURL B40220 EUROPRO CNC 13' X 242 TON PRESS BRAKE WITH CNC CROWNING



- > User Friendly Delem DA66T CNC Control Unit
- > 4 + 1 Axis CNC
- > Y1 & Y2 Precision Ram Positioning
- > X Precision Servo-Driven Back Gauge
- > Manually Adjustable Z1, Z2
- > Accurl Pro CNC Motorized Wave Crowning System
- > Efficient Low Noise and Accurate Hydraulic System Hoebiger
- > Silent and Reliable Internal Gear Pump
- > In Built Safety Systems (Light Guards & Laser Beam Safety Photocells As Standard, CE Certified)

ACCURL CPL-3015 XPR300 CNC PLASMA CUTTING MACHINE, 10' X 5' CAPACITY

- > EDGE Connect CNC system
- > Very Easy To Operate
- > Quick And Easy Installation
- > Low Investment And Operating Costs
- > Flexible Beam Path High Cutting Technology
- > Hy Performance MAXPRO200 Plasma Source
- > Power Pierce Technology & Long Life Technology
- > ProNest nesting software
- > Ultimately Strong Mechanics Under 2 Year Warranty

HYPER THERM XPR300[®] PLASMA SOURCES
•The XPR advances HyDefinition[®] cut quality by blending new technology with refined processes for next generation, X-Definition[™] cutting on mild steel, stainless steel and aluminum



MODERN TOOL HAS A COMBINED INVENTORY OF OVER 600 MACHINES (BOTH NEW AND USED) FOR QUICK DELIVERY.

ONTARIO OFFICE:

1215 RINGWELL DRIVE, NEWMARKET, ONT., L3Y 8T8
1-905-235-4199

WWW.MODERNTOOL.COM

CALGARY OFFICE (HQ):

11488 70TH STREET SE, CALGARY, AB, T2C 4Y3
1-403-236-1150

Newmarket, ON * Calgary, AB * Edmonton, AB * Saskatoon, SK * Atlantic Canada



CENTRAL RAIL SUPPLY LTD.

P.O. BOX 5158, L.C.D. 1, HAMILTON, ONTARIO L8L 8G1



CENTRAL RAIL NEW AND RELAY RAIL MINING RAIL & SWITCHWORK JOINT BARS / TRACKBOLTS FASTENERS

www.centralrailsupply.com

Tel: (905) 521-8477 · Fax: (905) 529-7912

Email: info@centralrailsupply.com

IRON WORKERS

38 ton	FARMASTER Punch, 12" throat, New, 575/3/60	Call	Mississauga	Westway	905 803 9999
55 ton	FARMASTER, 4" angle, 12" flat, 1-1/4" bar, New, In Stock	Call	Mississauga	Westway	905 803 9999
55 ton	EMPRO 55 ton, Model I-551 - IN STOCK	Call	Winnipeg	Empire Machinery	800 665 8089
60 ton	FARMASTER Punch, 12" throat, New, Stock	Call	Mississauga	Westway	905 803 9999
60 ton	Marvel 60 Ton, Model MSW600 - IN STOCK	Call	Winnipeg	Empire Machinery	800 665 8089
60 ton	DUEM, Pre-owned, Ironworker, Model IW55-	Call	Winnipeg	Empire Machinery	800 665 8089
66 ton	FARMASTER, 4" angle, 14" flat, 1-1/2" bar, brake, New, Stock	Call	Mississauga	Westway	905 803 9999
66 ton	FARMASTER, 5" angle, 14" flat, 1-1/2" bar, New, Stock	Call	Mississauga	Westway	905 803 9999
88 ton	FARMASTER, 6" angle, 18" flat, 1-3/4" bar, New, Stock	Call	Mississauga	Westway	905 803 9999
88 ton	FARMASTER Punch, 20" throat, New, Stock	Call	Mississauga	Westway	905 803 9999
100 ton	OMS 170 St. Mechanical Ironworker, 100 ton - USED - In Stock	Call	Concord	CML Machinery	905 669 5744
110 ton	FARMASTER, 6" angle, 24" flat, 1-3/4" bar, New, Stock	Call	Mississauga	Westway	905 803 9999
110 ton	FARMASTER, IW 110SD, 6" angle, 24" flat, 2008, 20" throat, Pre-owned	Call	Mississauga	Westway	905 803 9999
110 ton	FARMASTER Ironworker, Model: IW-110-SD	Call	Winnipeg	Empire Machinery	800 665 8089
110 ton	Pre-Owned FARMASTER Ironworker, Model IW-110-SD	Call	Winnipeg	Empire Machinery	800 665 8089
135 ton	FARMASTER, 6" angle, 24" flat, 2" bar, New	Call	Mississauga	Westway	905 803 9999
180 ton	FARMASTER, 8" angle, 30" flat, 2-1/4" bar, New, Stock	Call	Mississauga	Westway	905 803 9999
180 ton	Durma Ironworker, Model 165/300, 8"x8"x5/8" Angle, 29" x 3/4" Flat shear, 2013, Pre-owned	Call	Mississauga	Westway	905 803 9999

LATHES & LATHES CNC

9" x 22"	SOUTH BEND, 3 & 4 Jaw Chucks, Taper Att., Change Gears, 1/4 Hp, 110 Volt	Call	Toronto	Stevens Machinery	866 798 3611
LEBLOND REGAL	14" Swing, 40" CC., pre-owned	Call	Mississauga	Westway	905 803 9999

LAZERS, PLASMA

ALPHA LAZER	Prime Series 3015, 4020 & 6025, 5' x 10' - 8' x 20'	Call	Winnipeg	Empire Machinery	800 665 8089
ALPHA LAZER	Pro Series Fiber Laser, 8' x 10' - 8' x 40'	Call	Winnipeg	Empire Machinery	800 665 8089
EMPRO	5' x 10' HVAC Plasma Cutting Table c/w Shop Data	Call	Winnipeg	Empire Machinery	800 665 8089

MILLING MACHINES

9" x 49"	BEEMATO, Turret, B8, 2 Axis DRD, Variable Speed, Manual Feeds, 3 Hp Motor, 575 Volt	Call	Toronto	Stevens Machinery	866 798 3611
9" x 49"	FIRST, Turret, B8, Variable Speed, Reversible, Manual Feeds, 2 Hp, 575 Volt	Call	Toronto	Stevens Machinery	866 798 3611
IRM ROLLING MILL	2 High x 6" Wide, Uncoiler/Recoiler, Vari-Speed, New, 2000, 7.5 Hp, 230/60/3 Volt	Call	Toronto	Stevens Machinery	866 798 3611

NOTCHERS

STRIPPIT	5" x 5" x 10 Gauge Corner Notching Die, Front Table & Guides (2)	Call	Toronto	Stevens Machinery	866 798 3611
PIERCE-ALL	3" x 3" x 10 Gauge Corner Notching Die	Call	Toronto	Stevens Machinery	866 798 3611
APOLLO	1/2" x 9" x 9", Model IV 250/B, Hydraulic, Variable Angle, 5 Hp, 600 V, Elect. Foot Pedal	Call	Toronto	Stevens Machinery	866 798 3611
DURMA	Pre-Owned Model VN2006, 1/4" Hyd, Variable Angle Notcher	Call	Winnipeg	Empire Machinery	800 665 8089
EMPRO	Model HY-4, 10GA, 8.5" x 8.5" x 90 Degree Hydraulic Notcher	Call	Winnipeg	Empire Machinery	800 665 8089

PRESSES

DIE SHOES	For Presses - Different Sizes In Stock - COME AND HAVE A LOOK!!	Call	Toronto	Stevens Machinery	866 798 3611
1/2 ton	EMG (NEW), Manual Impact Press, 1" Stroke, 0.008" Impact Stroke	Call	Toronto	Stevens Machinery	866 798 3611
1-1/2 ton	EMG (NEW), Manual Tottle Press, 2.4" Stroke, 9.85" Shut Height	Call	Toronto	Stevens Machinery	866 798 3611
2 ton	ALVA ALLEN, OBI, 3/4" St, Mechanical, Bench Model, Hand Trip, 1/4 Hp, 110 Volt	Call	Toronto	Stevens Machinery	866 798 3611
2 ton	AZIMUTH, OBI, Bench Model, 1" St, 4-5/8" SH, Mechanical, 1/3 Hp, 110 Volt	Call	Toronto	Stevens Machinery	866 798 3611
3 ton	MANUAL ARBOR PRESS, 5-1/2" Throat, 12-1/2" Open Height, On Stand	Call	Toronto	Stevens Machinery	866 798 3611
4 ton	ALCECO, OBI, 1-1/4" St, 5-3/4" SH, 1/3 Hp, Mounted on Steel Bench, 550 Volt	Call	Toronto	Stevens Machinery	866 798 3611
4 ton	ALCECO, OBI, 4-8DT, 8" Throat, 1-1/4" St, Mech Clutch, 1/3 Hp, 208/230/460 Volt	Call	Toronto	Stevens Machinery	866 798 3611
4 ton	AZIMUTH, OBI, 4-DT12, 12" Throat, 1-1/4" St, 5-3/4" SH, 1/3Hp, 110 Volt	Call	Toronto	Stevens Machinery	866 798 3611
5 ton	WHITNEY JENSEN, Kick Press, 24" Deep Throat, Floor Model	Call	Toronto	Stevens Machinery	866 798 3611
8 ton	ALVA ALLEN, OBI, 1-1/2" St, 7" SH, Mech Clutch, Floor Standing, 1/4 Hp, 110 Volt	Call	Toronto	Stevens Machinery	866 798 3611
8 ton	ALVA ALLEN, OBI, 2-3/4" St, 8-3/4" SH, 10" Deep Throat, Floor Standing, 3/4 Hp, 550 Volt	Call	Toronto	Stevens Machinery	866 798 3611
8 ton	ALCECO, OBI, 1-1/2" St, 6" SH, Mech Clutch, Mounted On Steel Bench, 1 Hp, 550 Volt	Call	Toronto	Stevens Machinery	866 798 3611
10 ton	ROUSSELLE, OBI, 2" St, 6.5" SH, Mech Clutch, 1/2 HP, 110/220 Volt	Call	Toronto	Stevens Machinery	866 798 3611

- HAVE YOU CONSIDERED ADVERTISING BUT FOUND THE COST TO EXPENSIVE?
- ARE YOU INTERESTED IN REACHING NEW CUSTOMERS?

**WHY NOT ENQUIRE ABOUT OUR NEW BUSINESS ADS.
SMALLER IN SIZE AND LOWER IN COST.**

CHECK OUT PAGE #17 FOR MORE INFORMATION ABOUT THES NEW BUSINESS ADS.

SALIT STEEL

SALIT GROUP OF COMPANIES

www.salitsteel.com

Salit Steel is made up of an integrated network of companies and partners that together provide a full range of solutions through our Service Centre and Rebar Fabrication Division.

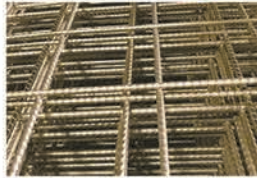
With operations in Ontario, Quebec and Western Canada, we are passionate about delivering outstanding service and value.



Reinforcing Steel Products



Black Rebar



Mesh Rebar and Rolls



Deformed and Smooth Wire



Stainless Rebar



Modular Rebar



Glass Fibre Reinforced Polymer (GFRP)



Fabricated Rebar



Cold Drawn Wire

Service Centre Products



Hollow Structural Steel (HSS)



Plate



Wide Flange Beams



Merchant Bar



Mechanical Tube



Cold Finished Bar



Painted Beams, Lintels and Posts

**Same Day Pick-Up
or Next Day Delivery**

NIAGARA

7771 Stanley Ave., P.O. Box 837,
Niagara Falls, ON L2E 6V6

Head Office: 905-354-5691 • Fax: 905-356-0809
Toll Free: 1-800-263-7110

BOWMANVILLE

222 Baseline Rd. E., Bowmanville, ON L1C 1A4
Phone: 905-623-5544 • Fax: 905-623-5564

Toll Free: 1-866-623-5544
(Former Site of Greeley Steel)

Oblong Punches and Dies

IO16 OBLONG Punches and Dies		IO20 OBLONG Punches and Dies		IO26 OBLONG Punches and Dies	
IO16 - IO55	IO20 - IO59	IO26 - IO62			
IO16 Punches \$65.00 IO55 Dies \$65.00	IO20 Punches \$70.00 IO59 Dies \$70.00	IO26 Punches \$82.00 IO62 Dies \$82.00			

KEY WAYS & WHISTLE STOPS
FURNISHED UPON REQUEST!



To view our complete Oblong Stock List go to:
<http://punchtools.com/ironworker>



Punch Cross Reference Table

Punch Tools	CST	CPD	AP	GF	Mechant	Piranha	Mubea
116	219	F16	119	37	DH	H1	
120	221	F20	121	40	EA	H2	
126	228	F26	128	45	EF		

Die Cross Reference Table

Punch Tools	CST	CPD	AP	GF	Mechant	Piranha	Mubea
155	413	F55	313	81	JB	H1	
159	417	F59	317	82	JC	H2	
162	419	F62	319	85	JF		

Press Brake Louver Tools

Capacity to 12GA Stainless



3" Louver Tool
\$850
1" IN/12" IN STOCK

For a video demonstration and more information go to:
<http://punchtools.com/louver>

Punch Tools Inc.

Toll Free: 1.800.668.4996 • Website: www.punchtools.com • Email: orders@punchtools.com
Proudly Made in Canada by Punch Tools

12 ton	ALVA ALLEN, OBI, 1-3/4" St. 8" SH, Mech Clutch Floor Standing, 3/4 Hp, 550 Volt	Call	Toronto	Stevens Machinery	866 798 3611
15 ton	ROUSSELLE, OBI, 2" St. 7-3/4" SH, Mechanical Clutch, 1 Hp, 550 Volt	Call	Toronto	Stevens Machinery	866 798 3611
20 ton	BL OW, OBI, 2" St. 7-3/4" SH, Mech. Clutch, 1 Hp, 550 Volt	Call	Toronto	Stevens Machinery	866 798 3611
20 ton	BROWN BOGGS, 2" Stroke, 11" x 20" Bed, Mechanical Clutch, 1-1/2 Hp, 550 Volt	Call	Toronto	Stevens Machinery	866 798 3611
22 ton	NUAGARA, OBI, 2" St. 8-3/4" SH, Air Act, Mech. Clutch, Palms, Foot Pedal	Call	Toronto	Stevens Machinery	866 798 3611
25 ton	YOSHINO, PIERCING, 1/2" Stroke, Air Clutch, 5/25 Volt, Palms, Safety Control	Call	Toronto	Stevens Machinery	866 798 3611
28 ton	BROWN BOGGS, OBI, 2-1/2" St. 6-3/4" SH, Air Act Mech Clutch, 2 Hp, 550 Volt	Call	Toronto	Stevens Machinery	866 798 3611
30 ton	BROWN BOGGS, OBI, 2-1/2" St. 9" SH Over Bed, Mechanical Clutch, 2 Hp, 550 Volt	Call	Toronto	Stevens Machinery	866 798 3611
30 ton	BROWN BOGGS, OBI, 2-1/2" St. 9" SH Air Act Mech Clutch, 2 Hp, 550 Volt	Call	Toronto	Stevens Machinery	866 798 3611
30 ton	BROWN BOGGS, OBI, 6" St. 9-3/4" SH, Air Act Mech Clutch, 3 Hp, 550 Volt	Call	Toronto	Stevens Machinery	866 798 3611
60 ton	BROWN BOGGS, 17.5 LJA, 5" str. Air clutch, light curtains, 86 SPM, Pre-owned	Call	Mississauga	Westway	905 803 9999
66 ton	SEYI SNI-86S, new	Call	Mississauga	Westway	905 803 9999
121 ton	SEYI SNI-121, new	Call	Mississauga	Westway	905 803 9999

PRESS BRAKES

	ELECTRIC CNC PRESS BRAKE (NEW) - COAST ONE (MADE IN FINLAND SINCE 2004, NEW ELECTRIC CNC, 2D GRAPHIC CONTROLS, 34" X 25 TON TO 13 FT X 165 TON, 3 AXIS TO 7 AXIS LASER GUARDS, SERVO DRIVE BALL SCREWS TO RAM WITH ENCODERS, CNC RAM CROWNING (STANDARD ON ALL MACHINES OVER 6 FT, 550 VOLT, PSR READY, TRAINING & INSTALLATION)	Call	Toronto	Stevens Machinery	866 798 3611
12 Ft Bottom Die Holder	2-1/2" H x 9" W x 17" Top Slot, 600 Screens Every 10" 3/4" H x 12" W Tong on bottom	Call	Toronto	Stevens Machinery	866 798 3611
50 ton x 31.5"	Model HPB-790, 31.5" x 50 Ton H Frame Press Brake	Call	Winnipeg	Empire Machinery	800 665 8089
88 ton x 8"	Finnpower, 6 axis, TS1 Control, Pre-owned	Call	Mississauga	Westway	905 803 9999
140 ton x 8"	Wysong, 7 axis CNC, Pre-owned	Call	Mississauga	Westway	905 803 9999
148 ton x 10"	EMPRO / ALMPAC, Hydraulic Press Brake	Call	Winnipeg	Empire Machinery	800 665 8089
110 ton x 10"	SAFARI E-Brake, new in stock	Call	Mississauga	Westway	905 803 9999
115 ton x 13"	GASPARINI, Model FBS 105 4000, Upgraded Cybtec Modiva Pac Control, 1997, Laser Beams Hydr. crowning	Call	Mississauga	Westway	905 803 9999
132 ton x 10"	BAYKAL, 5 axis + crowning, tooling, safety lights, stock	Call	Mississauga	Westway	905 803 9999
140 ton x 10"	SAFANI E-BRAKE ULTRA, New In Stock	Call	Mississauga	Westway	905 803 9999
176 ton x 10"	BAYKAL, 7-axis + crowning, tooling, safety lights, stock	Call	Mississauga	Westway	905 803 9999
176 ton x 12"	BAYKAL, 5 axis + crowning, tooling, safety laser beams, stock	Call	Mississauga	Westway	905 803 9999
175 ton x 12"	DIRMA, Pre-owned, Hydraulic Press Brake	Call	Winnipeg	Empire Machinery	800 665 8089
242 ton x 12"	EMPRO / ALMPAC, Hydraulic Press Brake	Call	Winnipeg	Empire Machinery	800 665 8089
176 ton x 12"	ERMAK, CNCHAP 11.8 x 176, 4 Axis, CNC crowning, Cybtec, DNC 60, 2008, Pre-owned	Call	Mississauga	Westway	905 803 9999
220 ton x 12"	BAYKAL, ESA EC4 control, 3 axis, manual crank crowning, 2011, Pre-owned	Call	Mississauga	Westway	905 803 9999
242 ton x 12"	BAYKAL, ESA EC4 control, 3 axis, manual crank crowning, 2011, Pre-owned	Call	Mississauga	Westway	905 803 9999

PUNCHING MACHINES

	UNIPUNCH & STRIPPIT "C" PUNCHES - All Sizes - Over 100 - boxes of punches & dies - all sizes	Call	Toronto	Stevens Machinery	866 798 3611
	CROWNING TOOL, NOBLOK, Flange Watson, Portable, Air/Oil Booster Unit, 2 Pieces of 14 Gauge, 110 Volt	Call	Toronto	Stevens Machinery	866 798 3611
8 ton - ROTEX	Manual Turret Punch, #18C-2.25, 18 Stations, 26" Throat, All Punches & Dies, Great For Sheet Metal Shop!	Call	Toronto	Stevens Machinery	866 798 3611

ROLLS - ANGLE, PLATE & TUBE

1.5" x 3/16"	SAHINLER Angle Roll, PK-30, New	Call	Mississauga	Westway	905 803 9999
2" x 1/4"	SAHINLER Angle Roll, HPK-35, new	Call	Mississauga	Westway	905 803 9999
2" x 1/4"	SAHINLER Angle Roll, HPK-50, new	Call	Mississauga	Westway	905 803 9999
2" x 1/4"	SAHINLER Angle Roll, HPK-65	Call	Mississauga	Westway	905 803 9999
3" x 1/4"	SAHINLER Angle Roll, HPK-80	Call	Mississauga	Westway	905 803 9999
4" x 3/8"	SAHINLER Angle Roll, HPK-100	Call	Mississauga	Westway	905 803 9999
1" x 1" x 1/8"	SAF, Angle Roll, Model BS40 Manual - New - In Stock	Call	Concord	CML Machinery	905 669 5744
2 1/4" x 2 1/4" x 1/4"	Taurina Angle Roll Alfa 50 H2 - New - In Stock	Call	Concord	CML Machinery	905 669 5744
2 1/4" x 2 1/4" x 1/4"	Taurina Angle Roll Saf DS 60PN - New - In Stock	Call	Concord	CML Machinery	905 669 5744
2 1/4" x 2 1/4" x 1/4"	Taurina Angle Roll Saf DS 60 BASIC - New - In Stock	Call	Concord	CML Machinery	905 669 5744
2 3/8" x 146a	Tube Taurina Slalom 60 CNC Right/Left Rolling DEMO - In Stock	Call	Concord	CML Machinery	905 669 5744
40" x 1/8"	FAMAR - Slip roll, A39-10/3 - New - In Stock	Call	Concord	CML Machinery	905 669 5744
40" x 1/8"	FAMAR - Slip roll, A39-10/3 - New - In Stock	Call	Concord	CML Machinery	905 669 5744
60" x 14 Ga	FAMAR - Slip roll, A39-15/2 - New - In	Call	Concord	CML Machinery	905 669 5744
60" x 14ga	EMPRO, STOCK - 60" x 14 Ga Powered Slip Roller - R-0520H	Call	Winnipeg	Empire Machinery	800 665 8089
60" x 10ga	EMPRO, STOCK - 60" x 10 Ga Powered Slip Roller - R-0535H	Call	Winnipeg	Empire Machinery	800 665 8089
60" x 10ga	EMPRO, STOCK - 60" x 14" Powered Slip Roller - R-0570H	Call	Winnipeg	Empire Machinery	800 665 8089
60" x 10ga	EMPRO, STOCK - 60" x 16 Ga Powered Slip Roller - R-0516E	Call	Winnipeg	Empire Machinery	800 665 8089
60" x 10ga	EMPRO, STOCK - 36" x 22 GA Powered Slip Roller - R3622E	Call	Winnipeg	Empire Machinery	800 665 8089
4" x 16ga	TENNSMITH powered Slip Roll, new,	Call	Mississauga	Westway	905 803 9999
4" x 10ga	SAHINLER Plate Roll	Call	Mississauga	Westway	905 803 9999
5" x 3/16"	SAHINLER Roll	Call	Mississauga	Westway	905 803 9999

- HAVE YOU CONSIDERED ADVERTISING BUT FOUND THE COST TO EXPENSIVE?
- ARE YOU INTERESTED IN REACHING NEW CUSTOMERS?

WHY NOT ENQUIRE ABOUT OUR NEW BUSINESS ADS.
SMALLER IN SIZE AND LOWER IN COST.

CHECK OUT PAGE #17 FOR MORE INFORMATION ABOUT THES NEW BUSINESS ADS.

Kubes Steel Quick Reference Chart for 2-Axis Section Rolling and Bending

KUBES STEEL
WHERE METAL TAKES SHAPE

Canada's Source for:
Structural Section, Pipe, Plate Rolling and Forming
Solutions for Architectural, Structural, Manufacturing,
Mining and Mechanical Process Applications



STEEL PLUS NETWORK LLC



Contact us:
930 Arvin Avenue
Stoney Creek, Ontario
Canada L8E 5Y8
Toll Free: 1.877.327.8357
Telephone: 905.643.1229
Facsimile: 905.643.4003
Email: kubes@kubesteel.com
www.kubesteel.com

ISO 9001

Where service is still personal



Canadian Owned , Family Operated



INDUSTRIAL GASES



FORKLIFT PROPANE



WELDING EQUIPMENT



WELDING WIRE & ELECTRODES



FABTECH CANADA

June 14 - 16, 2022, Toronto Congress Centre Booth #10051

201 Basaltic Road, Concord, ON., L4K 1G4

Ph: 416-658-1212 Email: richard@josefgases.com Website: www.josefgases.com

5' x 1/4"	SAHINLER, Hydraulic Roll, New	Call	Mississauga	Westway	905 803 9999
10' x 5/16"	SAHINLER, HYDRAULIC, 4 ROLL, Model 4R HS 30-260	Call	Mississauga	Westway	905 803 9999
10' x 5/8"	SAHINLER, HYDRAULIC, 4 ROLL, Model 4R HSS 30-360	Call	Mississauga	Westway	905 803 9999

SAWS

Band Saw	Vertical, KBC, 18" Throat, Blade Welder Var. Speeds, 23" x 17" Table, 2 Hp, 220/60/1 Volt	Call	Toronto	Stevens Machinery	866 798 3611
Band Saw	HYD-MECH DM-10, 9-3/4" round cap, new, stock	Call	Mississauga	Westway	905 803 9999
Band Saw	HYD-MECH Saw, S20M, 13" cap, round, new, stock	Call	Mississauga	Westway	905 803 9999
Band Saw	HYD-MECH Saw, S20P, 13" cap, round, new, stock	Call	Mississauga	Westway	905 803 9999
Band Saw	HYD-MECH Saw, S20P, "cap, round, Pre-Owned, 2018, stock	Call	Mississauga	Westway	905 803 9999
Band Saw	HYD-MECH Saw, S20A, automatic feed, 13" cap, new, stock	Call	Mississauga	Westway	905 803 9999
Band Saw	HYD-MECH Saw, S22A, automatic feed, new in stock	Call	Mississauga	Westway	905 803 9999
Band Saw	PISTORBUS, Double Mitre Saw, 2 x 10" Blades, Pneu. Foot Pedal, 110/220 Volt	Call	Toronto	Stevens Machinery	866 798 3611
Band Saw	1600 - FULLIS Bandsaw, 10" Round @ 90 degrees	Call	Winnipeg	Empire Machinery	800 665 8089
Band Saw	HYD-MECH Band Saw, H14A, Overhead bundling, 10 ft. Idler Conveyor, installed 2018, Pre-Owned	Call	Mississauga	Westway	905 803 9999
Band Saw	Various model single and double column - Steel-SS & Aluminum- New- In Stock	Call	Concord	CMI, Machinery	905 669 5744
Radial Arm Saw	BEVAL, 18" Carbide Tipped Blade, 26" Travel, 5 Hp Motor, 575 Volt	Call	Toronto	Stevens Machinery	866 798 3611
Cold Saw	BEVAL, 12" Blade, Steel & Aluminum, Dry Coolant, 48" Interchangeable Extensions, 5 Hp Motor, 575 Volt	Call	Toronto	Stevens Machinery	866 798 3611
Cold Saw	SCOTCHMAN, 12" Blade, Straight Cut, High/Low Speeds, Pneu. Infeed, Pneu. Vise, Pneu. Head	Call	Toronto	Stevens Machinery	866 798 3611
Cold Saw	ELUMATEC High Speed Saw, 15" blade, for aluminum	Call	Mississauga	Westway	905 803 9999
Cold Saw	SOCO, 11" blade, manual, new, stock	Call	Mississauga	Westway	905 803 9999
Cold Saw	SOCO, 12-1/2" blade, manual, new, stock	Call	Mississauga	Westway	905 803 9999
Cold Saw	SOCO, 14-1/2" blade, manual, New, Stock	Call	Mississauga	Westway	905 803 9999
Cold Saw	SOCO, 14-1/2" blade, fully automatic, CNC, new, stock	Call	Mississauga	Westway	905 803 9999
Cold Saw	SOCO, Automatic, Model 350 FA, 4" Cap., Pre-Owned	Call	Mississauga	Westway	905 803 9999
Cold Saw	12" & 14.5" blade, pivot or column - Steel-SS & Aluminum- New/Used- In Stock	Call	Concord	CMI, Machinery	905 669 5744

SEARS

4' x 10 ga	SAMPSON, Hydraulic Shear, New, Stock	Call	Mississauga	Westway	905 803 9999
3' x 16 ga	TENNISMITH, Foot Shear, New, In Stock	Call	Mississauga	Westway	905 803 9999
4' x 16 ga	TENNISMITH, Foot Shear, New, In Stock	Call	Mississauga	Westway	905 803 9999
4' x 16 ga	TENNISMITH Pneumatic Shear, new, stock	Call	Mississauga	Westway	905 803 9999
4' x 16 ga	TENNISMITH Hydraulic Shear, new, stock	Call	Mississauga	Westway	905 803 9999
10' x 16 ga	JOUNAEL, Electro-Mechanical Shear	Call	Winnipeg	Empire Machinery	800 665 8089
10' x 14 ga	TENNISMITH LM1014E, Shear, New	Call	Mississauga	Westway	905 803 9999
10' x 14"	EMPRO Hydraulic Shear	Call	Winnipeg	Empire Machinery	800 665 8089
10' x 1/4"	BAYKAL Hydraulic Swing Beam Shear, new, stock	Call	Mississauga	Westway	905 803 9999
10' x 5/16"	BAYKAL Hydraulic Swing Beam Shear, 2020, Rear Sheet support, pre-owned, stock	Call	Mississauga	Westway	905 803 9999
10' x 3/8"	BAYKAL Hydraulic, CNC, Guillotine Shear, 2021, Rear Sheet support, pre-owned, stock	Call	Mississauga	Westway	905 803 9999
12' x 1/4"	BAYKAL Hydraulic Shear, New, stock	Call	Mississauga	Westway	905 803 9999
12' x 1/4"	BAYKAL Hydraulic Shear, 2014, Programmable back gauge, Ft. Sluicing arm, 3 sheet supports, Pre-owned	Call	Mississauga	Westway	905 803 9999
12" x 1/4"	WYSONG, Hydraulic, 36" CNC Back Gauge, 50 Arm, Two Support Arms, 20 Hp, 550 Volt - SPECIAL PRICE!	Call	Toronto	Stevens Machinery	866 798 3611
50" x 16 ga	EDWARDS, Pneumatic Shear, Pneumatic Foot Pedal, Pneumatic Hold Downs	Call	Toronto	Stevens Machinery	866 798 3611
72" x 16 ga	NIAGARA, Mechanical Shear, Mechanical Foot Pedal, 5 Hp, 575 Volt	Call	Toronto	Stevens Machinery	866 798 3611
52" x 14 ga	SAMPSON, Hydraulic, 40 SPM, Single/Continuous, Electric Foot Pedal, 3 Hp, 550 Volt	Call	Toronto	Stevens Machinery	866 798 3611
52" x 14 ga	EMPRO Hydraulic Shears, H5214-220/1, 220/3, & 575/3 Phase	Call	Winnipeg	Empire Machinery	800 665 8089
60" x 14 ga	EMPRO, Model H6014 - 60" x 14 Ga Hydraulic Shears	Call	Winnipeg	Empire Machinery	800 665 8089
10' x 1/4"	VIMERCATI, F016, Plate Support, Hydraulic - USED - In Stock	Call	Concord	CMI, Machinery	905 669 5744

SHEET METAL EQUIPMENT

FLAGLER	20ga, Pittsburg Machine, new, stock	Call	Mississauga	Westway	905 803 9999
FLAGLER	24ga, Junior Pittsburg Machine, new, stock	Call	Mississauga	Westway	905 803 9999
VICON	S and Drive cleat rollformer, with pittsburg rolls and 4-1 rolls and slitter, NEW	Call	Mississauga	Westway	905 803 9999
VICON	20ga, Snap Lock Button Punch, new, stock	Call	Mississauga	Westway	905 803 9999
PIERCE ALL	50 ton, Hydraulic Ram, Single Head, Punch Holder, Cabinets, No Tooling, 5 Hp, 550 Volt	Call	Toronto	Stevens Machinery	866 798 3611
JOURNAL	CNC Folder, 10'1 x 16GA, IN S100K	Call	Winnipeg	Empire Machinery	800 665 8089
NORLOK	SURLOCK III, Clinchng Machine	Call	Winnipeg	Empire Machinery	800 665 8089
NORLOK	SURLOCK II, High Speed Clinchng Machine	Call	Winnipeg	Empire Machinery	800 665 8089
ENGEL	Pre-Owned, 26-16 GA Mild Steel, Seam Closer	Call	Winnipeg	Empire Machinery	800 665 8089
SPIRAL HELIX	5" - 5", Gorelocker Sport Plus	Call	Winnipeg	Empire Machinery	800 665 8089
EMPRO	5ET x 16GA, Dual Beader	Call	Winnipeg	Empire Machinery	800 665 8089
TIN KNOCKER	20 GA, Pittsburgh Rollformer c/w Flanger & Drive Cleat Rolls	Call	Winnipeg	Empire Machinery	800 665 8089
TIN KNOCKER	24 GA, Pittsburgh Rollformer c/w Flanging Attachment	Call	Winnipeg	Empire Machinery	800 665 8089
LOCKFORMER	24 Ga Pittsburgh Rollformer - Pre-owned	Call	Winnipeg	Empire Machinery	800 665 8089
LOCKFORMER	16 Ga Pittsburgh Rollformer - Pre-owned	Call	Winnipeg	Empire Machinery	800 665 8089
LOCKFORMER	Pre-Owned Model 20, 20 Ga Button Punch Snap Lock Flanger	Call	Winnipeg	Empire Machinery	800 665 8089
EMPRO	Slitter, Model SFS-548 Power Gann Slitter 220/1 Phase	Call	Winnipeg	Empire Machinery	800 665 8089

TUBE MACHINERY

ADDISON MCKER	Tube End former, Model FM-150ER, 6" Capacity, 2006, Pre-owned	Call	Mississauga	Westway	905 803 9999
SPIRAL HELIX	3600 Tubeformer	Call	Winnipeg	Empire Machinery	800 665 8089
MEMOLI	2.5" Sch. 40 - Memoli ETM 76, Mandrelless, 1 axis, 575V3PH - New- In Stock	Call	Concord	CMI, Machinery	905 669 5744
MEMOLI	2.5" Sch. 40 - Memoli ETM 76, Mandrelless, 1 axis, 575V3PH-USED	Call	Concord	CMI, Machinery	905 669 5744
EUREKAMATIC	4" x 3/8" - EurekaMatic C/C - Bending, Scrolling & Circle-New- In Stock	Call	Concord	CMI, Machinery	905 669 5744
ERCOLINA	2" Sch. 40 - Ercoline 050 Top Bender, Mandrelless, 1 axis-USED- In Stock	Call	Concord	CMI, Machinery	905 669 5744
MACKMA	2" Sch. 40 PIPE - MACKMA BM 60-SA, Mandrelless, 1 axis-NEW- In Stock	Call	Concord	CMI, Machinery	905 669 5744
MACKMA	1" PIPE - MACKMA BM 34-BA, 110VOLT 1 phase, 1 axis-NEW- In Stock	Call	Concord	CMI, Machinery	905 669 5744

WELDING EQUIPMENT

Tig & Stick Welder	275 Amp, LINCOLN, Plug, Cables, Microstart, Sq. Wave, 575/1/60 Volt	Call	Toronto	Stevens Machinery	866 798 3611
Spot Welder	75 KVA, WELDOMATIC, Spot Welder-18" Throat, Weltronic, Depaste 5 Control, Air Foot Pedal, 550 Volt	Call	Toronto	Stevens Machinery	866 798 3611
Spot Welder	18 KVA, BEK, 14" Arms, Water Cooled Tips, Mech. Treadle, 550 Volt	Call	Toronto	Stevens Machinery	866 798 3611
Spot Welder	15 KVA, WELDOMATIC, 7-1/2" Arms, Water Cooled Tips, Mech. Treadle, 550 Volt	Call	Toronto	Stevens Machinery	866 798 3611
Spot Welder	10 KVA, WELDOMATIC, 12" Arms, Water-Cooled Tips, Mech. Treadle, 550 Volt	Call	Toronto	Stevens Machinery	866 798 3611
Wirefeeder	FRONIUS, VR1500, Robotic, 4 Roller Drive, Diaital Controlled For 3 rd Axis, New	Call	Toronto	Stevens Machinery	866 798 3611
SAND BLAST CABINET	Pre-Owned, Model P-3636-6, Pressure Dry Blast Cabinet	Call	Winnipeg	Empire Machinery	800 665 8089

MISCELLANEOUS EQUIPMENT

Air Compressor	- 10 HP, 80 Gallon Horizontal Tank, Two Stage Piston Vee Head, 550 Volt	Call	Toronto	Stevens Machinery	866 798 3611
Air Compressor	- 15 HP, 120 Gallon Horizontal Tank, Two Stage Piston Vee Head, 550 Volt	Call	Toronto	Stevens Machinery	866 798 3611
SAND BLAST CABINETS	EMPIRE, PF-3648 SBR-4, 2 Gloves, Gun, Lights, 1 Hp, 110 Volt	Call	Toronto	Stevens Machinery	866 798 3611
ROPPER WHITNEY	rotary turning, 24ga., pre-owned	Call	Mississauga	Westway	905 803 9999



**FERRIC
MACHINERY**

**HIGH QUALITY
MACHINES | SERVICE | PARTS**

📍 10 Natura Way Cambridge, ON N3C 0G7

**BEST PRICES
BEST SERVICE
BEST VALUE**



PRESS BRAKES



BANDSAWS



**METAL DEBURRING
& FINISHING**



FOLDING MACHINES



PROFILE ROLLS



LASER CUTTERS



IRONWORKERS



PLATE ROLLS



PUNCHING MACHINES

WWW.FERRICMACHINERY.COM Toll-Free (877) 337-7424 Local (519) 220-1429



PRESS BRAKE TOOLING
European | North American
Wila/Trumpf

EXPERT SERVICE
Repair | Installation | Training
Preventative Maintenance



Important Notice:

Steel Marketplace is Updating it's Mailing List

To ensure you remain on our mailing list, please choose ONE of the following options:

1. Please complete the form and fax to 905-685-4766.

Company Name: _____

Contact Name: _____

Street Address: _____

City: _____ **Prov.:** _____ **Postal Code:** _____

Phone: _____

Email: _____

**Subscribe,
Please Check this box.**

**Unsubscribe,
Please Check this box.**

2. Go Online to: www.steelmarketplace.com/subscribe-steel-marketplace/ and complete the online form for subscription updating.

FOLDING MACHINE 10' x 14 Ga. Tennsmith , SBS126 , CNC , 2013 , Pre-owned SPIRAL HELIX 5" - 5", Goretlocker Sport Plus Zakron 2 axis press brake gage system X & Y - New- In Stock Several sizes of Blades for Pearson Shear and Farina Shear - In Stock	<table border="0" style="width: 100%; border-collapse: collapse;"> <tr> <td style="width: 25%;">Call</td> <td style="width: 25%;">Mississauga</td> <td style="width: 25%;">Westway</td> <td style="width: 25%;">905 803 9999</td> </tr> <tr> <td>Call</td> <td>Winnipeg</td> <td>Empire Machinery</td> <td>800 665 8089</td> </tr> <tr> <td>Call</td> <td>Concord</td> <td>CML Machinery</td> <td>905 669 5744</td> </tr> <tr> <td>Call</td> <td>Concord</td> <td>CML Machinery</td> <td>905 669 5744</td> </tr> </table>	Call	Mississauga	Westway	905 803 9999	Call	Winnipeg	Empire Machinery	800 665 8089	Call	Concord	CML Machinery	905 669 5744	Call	Concord	CML Machinery	905 669 5744
Call	Mississauga	Westway	905 803 9999														
Call	Winnipeg	Empire Machinery	800 665 8089														
Call	Concord	CML Machinery	905 669 5744														
Call	Concord	CML Machinery	905 669 5744														

STEEL MARKETPLACE	ANGLE/CHANNEL/FLAT/ROUNDS/SQUARES	STEEL MARKETPLACE	STEEL MARKETPLACE
63 pcs	Angle - 1 x 1 x 1/8 x 20' - no MTR's	Call	Niagara Falls
15 tons	Angle 2 x 2 x 3/8 x 34' - 3"	Call	Niagara Falls
2 tons	Angle 3 x 2 x 5/16 x 18' - 8"	Call	Niagara Falls
5 tons	Angle 3 x 3 x 1/2 - 40'	Call	Niagara Falls
9 pcs	Channel - 10 @ 25 x 13' to 19'	Call	Niagara Falls
100 pcs	Flat Bar - 3/16 x 1 1/2 x 7.75'	Call	Niagara Falls
1 tons	Flat Bar - 3/16 x 1/2 x 20'	Call	Niagara Falls
2 tons	Flat Bar - 1/2 x 2 3/4 x 20'	Call	Niagara Falls
2 tons	Flat Bar 5/16 x 1 1/4' - 20'	Call	Niagara Falls
2 tons	Flat Bar 5/16 x 2 1/4 x 20'	Call	Niagara Falls
3 tons	Flat Bar 5/16 x 2 1/2 x 20'	Call	Niagara Falls
3 tons	Flat Bar 5/16 x 3 1/2 x 20'	Call	Niagara Falls
6 tons	Flat Bar 5/16 x 4 x 20'	Call	Niagara Falls
6 tons	Flat Bar 5/16 x 7 x 20'	Call	Niagara Falls
1 tons	Flat Bar 3/8 x 1 3/4 x 20'	Call	Niagara Falls
1 ton	Flat Bar 3/8 x 2 1/4 x 20'	Call	Niagara Falls
20 pcs	Flat Bar 1/2 x 3 x 7.5'	Call	Niagara Falls
1 ton	Flat Bar 5/8 x 2 x 20' no MTR's	Call	Niagara Falls
2 tons	Flat Bar 1/2 x 2 3/4 x 20'	Call	Niagara Falls
2 tons	Flat Bar 5/8 x 1 x 20'	Call	Niagara Falls
1 tons	Flat Bar 5/8 x 1 1/4 x 20'	Call	Niagara Falls
23 pcs	Flat Bar - 5/8 x 3 x 8.667'	Call	Niagara Falls
2 tons	Flat Bar 5/8 x 3 1/2 x 20'	Call	Niagara Falls
2 tons	Flat Bar 3/4 x 1 1/4 x 20'	Call	Niagara Falls
5 tons	Flat Bar 1 x 7 x 20'	Call	Niagara Falls
2 tons	Flat Bar 1 1/4 x 5 x 20'	Call	Niagara Falls
44 pcs	Round Bar - 1 3/8" x 15' - wavy	Call	Niagara Falls
44 pcs	Round Bar - 1 3/8" x 5' - wavy	Call	Niagara Falls

STEEL MARKETPLACE	RAIL - STEEL	STEEL MARKETPLACE	STEEL MARKETPLACE
30# ASCE RAIL - 20' & 30' LTHS.	Call	Hamilton	Central Rail
40# ASCE RAIL - 20', 30' & 40' LTHS.	Call	Hamilton	Central Rail
60# ASCE RAIL - 20', 30' & 40' LTHS.	Call	Hamilton	Central Rail
80# ASCE RAIL - 39' LTHS.	Call	Hamilton	Central Rail
85# ASCE RAIL - 39' LTHS.	Call	Hamilton	Central Rail

STEEL MARKETPLACE	TUBE AND PIPE	STEEL MARKETPLACE	STEEL MARKETPLACE
22 pcs	4" od x .213 wall x 6'-3"	Call	Niagara Falls
10 pcs	5.5 x 5.5 x .213 x 52' - A500C	Call	Niagara Falls
4 pcs	8x3x .307x48' - A500C	Call	Niagara Falls
4 pcs	8x4x .500 - 50W	Call	Niagara Falls
3 pcs	12x8x .625x32'	Call	Niagara Falls
2 pcs	14x4x .375x48' - A500C	Call	Niagara Falls
1 pcs	14x14x .375x29' A500C	Call	Niagara Falls
2 pcs	16x12x .313x27.083' A500C	Call	Niagara Falls
1 pcs	18x6x .500x30' A500C	Call	Niagara Falls

STEEL MARKETPLACE	I BEAMS & WF BEAMS	STEEL MARKETPLACE	STEEL MARKETPLACE
24 pcs	std I Beam - 8 @ 23 x 13.83'	Call	Niagara Falls
8 pcs	std I Beam - 10 @ 25.4x10' to 16'	Call	Niagara Falls
10 pcs	WF Beam - 10 @ 9x9x7' to 10'	Call	Niagara Falls



Specializing In High Quality TIG Welding

Our Services Include:

- Stainless Steel Sheet Metal
- Cutting
- Shearing
- Forming
- Production TIG Welding



LAVERNE MARTIN TIG WELDING
1636 Lobsinger Line, Waterloo, ON N2J4G8
Ph: 519-664-0822



HAVE EQUIPMENT OR A SHOP FOR SALE?

WE WILL PAY CASH FOR YOUR SURPLUS
CALL US TODAY! 844.478.8181

WWW.RESELLCNC.COM




Rotoburr Manual Single-Ended Tube Deburring Machine

Machines In-Stock
Ready to Ship
Complete Line of Deburring Brushes

9601 York Alpha Drive, North Royalton, Ohio 44133
Ph: 440.582.3400 Email: sales@kentcorporation.com
www.kentcorporation.com



Automec Inc.
82 Calvary St., Waltham, MA 02453
Ph: 781-893-3403 Email: sales@automec.com

Control Retrofits 1, 2 or 3 Axis
Backgauge Systems
Front Gauge For Shears
Shearfeed Systems
Parts Available From Stock



Specializing in Precision Machining & Custom Fabrication Since 1982

Quick Facts:

- Established in 1982
- Privately owned and operated
- 70,000 sqft of shop space
- Ship product across North & South America and Europe

Industries we Serve

- Agricultural
- Construction
- Industrial
- Mining & Exploration
- Oil & Gas
- Transportation

Quality Control

- Inspection sheet with Work Orders
- Co-ordinate Measuring Equipment
- Detailed Non-Conformance Database

Production Planning & Procedures

- Manufacturing Planning Software
- Live Electronic Shop Floor Planning
- Work Center Load Reports
- All Work Orders are scanned and Electronically filed

Latest Technology

- SolidWorks (3D CAD)
- Electronic Data Interchange
- Barcoding System

Vertical Machining Centers

- Up to 30' x 120" table size
- Pallet Changer
- 4th Axis Rotary Tables

Horizontal Machining Center

- 400mm Pallet with 22" x 24.8" x 23.6" work envelope

CNC Turning Centers

- Live Tooling
- Up to 4'00" thru bore
- Turning Capacity up to 17" x 34"
- 5 Axis Multi-Task Machining
- Dual Spindle with milling head for cross drilling and machining
- 2.625" Bore
- Automated Bar Feeder

P.O. Box 269 Arborg, Manitoba, R0C 0A0
TF: 1-888-364-2404 Email: info@diemomachine.com
www.diemomachine.com



306-483-5055  Serving NORTH AMERICA

Structural Steel and Custom Metal Fabrication

From structural steel fabrication such as commercial and industrial buildings and modules to other custom fabrication projects, Saskarc is your professional fabrication solution. We are your trusted fabrication partner who bridges the gap to maximize value through innovative solutions that reduce risk and total installed project cost.

<p>Structural Fabrication</p> <p>Saskarc combines our experienced team's expertise with state-of-the-art automation technology to streamline customer's structural projects.</p>	<p>Custom Fabrication</p> <p>Saskarc's nearly 30 years of experience with heavy, large-scale platework fabrication ensures your project is flawlessly executed from start to finish.</p>
<p>Modularization</p> <p>Saskarc applies advanced modularization design best practices in order to minimize site work and reduce project risk.</p>	<p>Our Approach</p> <p>Saskarc analyzes every project to define the critical requirements that maximize value for our customers.</p>

2 Marconi Road P.O. Box 990 Oxbow, Saskatchewan, S0C 2B0
Ph: 306-483-5155 Email: fabricating@saskarc.com
www.saskarc.com

- Does Your Company Supply A Product or Service to the Canadian Metal Fabrication Industry?
- Are You Interested In Reaching New Customers?
- Have You Considered Advertising, But Found The Cost To Expensive?

If You Answered Yes To The Above Questions,

Why Not Inquire About Steel Marketplace's New Business Ads.

These ads are smaller in size and lower in cost; however, you still get the exposure that Steel Marketplace has been providing it's advertisers over the last 30 years.

For as little as \$250.00/month plus applicable taxes, (minimum insertion period of 4 consecutive months) you can advertise your Product and/or Service to thousands of potential customers every month.

Call 1-800-263-1440

WEBER

Precision Edge Rounding & Finishing



- › ALL SPEEDS & HEAD HEIGHTS THROUGH TP700 CONTROL
- › SENSORS TELL CONTROL WHEN BRUSHES ARE WORN
- › AUTO THICKNESS CONTROL ON ALL MACHINES
- › TRAINING INCLUDED IN YOUR PLANT
- › DELIVERY TO YOUR DOOR

THIS IS THE LAST ONE AVAILABLE FROM STOCK

MODEL PT-1350 DR2 COMPACT

- 53" WIDE
- 1ST HEAD-ABRASIVE/SCOTCHBRITE BELT
- 2ND HEAD - MRB ROTATING BRUSHES TO EDGE ROUND
- VACUUM UNDER BRUSHES
- STRAIGHT GRAIN FINISH - NO SWIVEL LINES

Stevens Machinery Sales Inc. • P 416-798-3611 • TF 866.798.3611



STEEL MARKETPLACE

12 - 111 Fourth Ave., Suite #351 St. Catharines, ON L2S 3P5 Phone: 905-685-4766

Email: info@steelmarketplace.com Website: www.steelmarketplace.com

To re-direct, cancel or obtain additional copies, please email your request to: info@steelmarketplace.com

Publisher: Colin Klein Design & Layout: Peak Digital Imaging Inc.

NEXT ISSUE: FEBRUARY 2023

CLOSING DATE FOR NEXT ISSUE: JANUARY 23, 2023

Published Monthly & Distributed Across Canada - For Advertising & Rate Please Call

1-800-263-1440

Steel Marketplace Publication and Logo Copyright © 2013. All rights reserved.

No part of this publication may be reproduced without the express permission from the publisher.

The publisher assumes no responsibility for statements or claims made by advertisers.

JANUARY 2023 ADVERTISERS INDEX

COMPANY	PAGE	COMPANY	PAGE
Central Rail Supply	10	Machine Solutions	FC
CML Machinery	19	Modern Tools Ltd	8 - 9
Fabricating Machinery Solutions (FMS)	7	Salit Steel	11
Ferric Machinery	4, 15	Punch Tools	12
Josef Gases	14	RESELL CNC	17
Kubes Steel	13	Stevens Machinery	5, 18
Laverne Martin Welding	17	Tri-County Saw Services	6
MC Machinery	3	Westway Machinery Ltd.	2, BC



CML Machinery Inc.
300 Bradwick Drive
Vaughan, ON L4K 1K8

Helping your business grow for over 40 years
We Service 100% of Everything We Sell

Tube/Profile Rolling Machines

Pipe/Tub Bending Machines

Delta Series



Coiler



Wire Benders

Tube Bending Machines



REBAR BENDING MACHINE



IMET SAWING TECHNOLOGY



P: 416-661-4609 • F: 416-661-5993 • 1-877-265-6224

See our lineup of products at: www.cmlmachinery.com

FABMaster

HYDRAULIC IRONWORKERS & PUNCHING MACHINES



Pipe Notching



Angle Bending



Punching



Rounding off
Corners



Press Brake



Punching



Radius Corners



Pipe Punching



Cutting and
Rounding off



Bilateral
Rounding off



Round Bar Shear



Square Bar Shear



Channel Shear



I Beam Shear



Angle Shear

HIGHEST
QUALITY
BEST
VALUE.



Flat Bar Shear



Angle Miter Shear



Vee Notching



Notching



Notching



Westway Machinery Ltd.
www.westwaymachinery.com

647-308-5985

CANADA POSTES
POST CANADA



Postage paid Port payé
Personalized Mail Courrier personnalisé

4003476

Printed on
Recycled Paper

