

# STEEL®

**MARKETPLACE**

CONNECTING BUYERS & SELLERS IN THE FABRICATION AND METAL WORKING INDUSTRY

## IMPROVING YOUR PRODUCTIVITY IS JUST ONE PHONE CALL AWAY!



### Advanced Technology, Versatility, and Precision

The XBLADE is a stand-alone **all in one** automatic machine for processing steel profiles of different sizes, with sections from **30x30 to 305x305mm** with variable lengths.



Drilling



Tapping



Milling



Cutting



#### Features:

- Universal head
- Modular design
- Versatile spindle
- Precision movement
- Advanced command systems



Click To Play Video

#### Includes:

- Profile nesting
- Compact design
- Automatic tool rack
- Double-axis rotary head
- Section clamping system
- Electro-spindle cutting tool

*XBLADE represents a paradigm shift in the metalworking machinery sector, offering unrivalled versatility, efficiency, and precision to meet the evolving demands of modern manufacturing.*

ASK US ABOUT OUR COMPLETE LINE OF MAINTENANCE & CONSUMABLE PRODUCTS

1.866.995.9910

**FMS** Fabricating  
Machinery  
Solutions Inc.+

www.fmscanada.ca

# WELDMATIC AUTOMATION



**Welding Made Easy:  
Simple, Affordable  
and Tailored for You!**

**What are we offering?**



- Plug, Teach & Weld in under 30 minutes
- Customized solution to meet your needs with our positioners & tracks
- Grow Smarter - Upgrade anytime to elevate your capabilities including Laser Seam Tindal, Offline Robotic Programming, easy-to-learn Fast Rendant Pro and many more!
- Applications including MIG, TIG & Laser Welding
- Brand-agnostic: we work with power sources including Miller, Lincoln and Fronius based on YOUR PREFERENCE

STARTING AT **CAD\$40K**

Contact Us Today!

info@weldmatic.ca  
(236) 333-9174

weldmatic.ca



# “THE MITSUBISHI LASER IS OUR *WORKHORSE* AT OLYMPIC STEEL”

**Si Cha  
Olympic Steel**

Plant Manager  
Fabrication Division  
Buford, Georgia



Scan to learn more



With the latest in artificial intelligence (AI) and gas reduction technology, the new GX-F ADVANCED Series of two-dimensional fiber lasers delivers more power while using less nitrogen.

Artificial intelligence is a branch of computer science that automates intelligent behavior and machine learning. This means the machine itself can learn from data and adjust performance without human intervention.



For more info, visit [mcmachinery.com](http://mcmachinery.com)





**STANDARD SLAGHOG®**  
For Lasers Up To 12kW  
(Min Slat Spacing 1.75")



**SLAGHOG® HD**  
For Lasers Over 12kW  
(Min Slat Spacing 1.75")



**NARROW SLAGHOG®**  
For Lasers Up To 12kW  
(Min Slat Spacing 1.25")





**SLAT SHIELD PLUS**



**RHINO HAMMER**

**SLAGHOG™** efficiently removes slag from your **CO2** or **Fiber Laser** slats. It increases the life of your slats, reduces down-time due to slat change out and helps maximize actual production time. It works great on steel or copper slats. A standard laser table can typically be cleaned in about **10 minutes** by a single operator. Call for more information.



**1.866.995.9910**

**FMS** Fabricating Machinery Solutions Inc. • [www.fmscanada.ca](http://www.fmscanada.ca)

FMS is the exclusive Canadian distributor of the Slag Hog slat cleaner.



**MACHINERY**

**LISTING CONTACT:**

**SM - STEVENS MACHINERY, TORONTO (REXDALE), ON., PH: 866-798-3611**  
**SALIT STEEL - SALIT STEEL, NIAGARA FALLS, ON., PH: 800-263-7110**

**WM - WESTWAY MACHINERY, MISSISSAUGA, ON., PH: 905-803-9999**  
**EMP- EMPIRE MACHINERY, WINNIPEG, MB., PH: 800-665-8089**

**BRAKES MANUAL**

3' x 16ga. Brown Boggs, Box & Pan Brake, 163-B, c/w bench, Pre-owned	WM
4' x 22ga. TENNSMITH, Bench Brake, new, stock	WM
4' x 22 ga. TENNSMITH, Box and pan brake - new, stock	WM
4' x 16 ga. TENNSMITH, Bench Brake - new, stock	WM
4' x 16 ga. TENNSMITH, Box & Pan Brake, - new, stock	WM
4' x 12 ga. TENNSMITH, Box & Pan Brake, new, stock	WM
6' x 16 ga. TENNSMITH, Box and Pan Brake, new, stock	WM
6' x 12 ga. SAMPSON, Box & Pan Brake, LD612U, new, stock	WM
8' x 18 ga. TENNSMITH - Apron Brake, new, stock	WM
8' x 16 ga. SAMPSON, New Hand Brake, Heavy Duty, In Stock!	SM
8' x 16 ga. TENNSMITH - Apron Brake, new, stock	WM
8' x 16 ga. TIN KNOCKER TK 816 Handbrake	EMP
8' x 16 ga. WHITCO, Used Hand Brake, Made in USA, SPECIAL PRICE	SM
8' x 12 ga. EMPRO-Model V-812-6, Manual Box & Pan Brake - STOCK	EMP
8' x 12 ga. SAMPSON, Apron Brake, new, stock	WM
8' x 12 ga. SAMPSON, Hydraulic, Box & Pan Brake, New	WM
10' x 18 ga. TENNSMITH, Apron Brake New, stock	WM
10' x 16 ga. SAMPSON, New Hand Brake, Heavy Duty, In Stock!	SM
10' x 16 ga. NATIONAL, New Hand Brake, 100% USA MADE	SM
10' x 16 ga. TENNSMITH, Used Hand Brake, USA Made - In Stock	SM
10' x 16 ga. SAMPSON, Apron Brake- Pre-owned	WM
10' x 16 ga. TENNSMITH, Apron Brake New, Stock	WM
10' x 16 ga. TIN KNOCKER Floor Model Brakes	EMP
10' x 16 ga. SCHECHTL MAX-F 10' x 16 GA CNC Folder -Call - IN STOCK	EMP
10' x 14 ga. EMPRO Model V-1014-6, Manual Box & Pan Brake	EMP
10' x 14 ga. SAMPSON, Hydraulic Box & Pan, new, stock	WM

**COIL HANDLING & FEEDING**

UNCOILER DURANT, 600 Lb, Manual, 10" Wide x 44" OD, 3 Keeper Arms, Manual Expansion	SM
UNCOILER Littell Double Sided Stock Reel, 300 Lbs Each Side, 6.5" Wide x 46" OD, Manual, Keeper Arms	SM
UNCOILER LITTELL, 1400 Lb Capacity, 7-1/2" Width, 34" OD, Keeper Arms, 208/230/460 Volt Motor	SM
UNCOILER COLT, 2,500 lbs x 10" Wide x 40" OD Coil, Keeper Arms, 1 Hp DC Motor, Variable Speed, 110 V	SM
UNCOILER AMERICAN STEEL, 2,500 lbs x 18" Wide x 48" OD Coil, Keeper Arms, Drag Brake, Manual	SM
UNCOILER LITTELL, 2,500 lbs x 18" Wide x 54" OD Coil, Keeper Arms, Drag Brake, Manual Expansion	SM
Rapid Air Feeds in Stock, RAPIDAIR, 2" - 12" wide, New	WM
Motorized Uncoiler, Pre-owned	EMP

**DEBURRING & FINISHING MACHINES**

BURRMASTER Tube End Deburring Machines, Single & Double End, High Speed, NEW & USED	SM
WEBER Deburring Machine, PT-1350 DP(6), Abrasive Belt / Planetary Brush, Vacuum Bed, 600 Volt	SM
WEBER Deburring Machine, PT-1350 DR 2, Abrasive Belt / Rotary Brushes, Vacuum Bed, 600 V	SM
WET DUST COLLECTOR UNITS, USED, 3,000 & 5,000 CFM, Stainless Steel, 7-1/2 Hp & 10 Hp,	SM
SOCO Tube End Chamfering, 4" cap., new, stock	WM
TIMESAVERS 37" Model 2111-13-00, Single head, wet, 2005, Pre-owned	WM
APEX 37" EZ Sander, IN STOCK	EMP
APEX 37" 2 Station Wide Belt / Disc Deburring/Finishing Machine - Stock	EMP
FEIN STOCK - GX75 2H Belt Grinder	EMP

**DRILLS & GRINDERS**

EMPRO Z5030, 1.5" Gear Head Drill Press - IN STOCK	EMP
EMPRO DM5040, 1.5" Gear Head Drill Press - IN STOCK	EMP
BUFFALO Floor Model Drill, # 18, # 3 MT, 1" Capacity, 12" x 12" Table, 1/2 Hp, 110 Volt	SM
BUFFALO Floor Model Drill, # 18, # 3 MT, 1" Capacity, 14" x 14" Table, 1.5 Hp, 550 Volt	SM
ERLO Geared-Head, # 3 MT, TC-30, 1-3/16" Capacity, 16.5" x 15.75" Table, 2 Hp, 575 Volt	SM

[mvdcanada.com](http://mvdcanada.com)  
226-907-2422



TAKE BENDING TO THE NEXT LEVEL



**EUROSTAMP TOOLING**  
the Italian excellence

**ILASER**

BIG SOLUTIONS FOR SMALLER SPACES

**M-series**

Fiber Lasers Starting from

**\$134,000 (2kW)**

**\$186,000 (6kW)**





# CENTRAL RAIL SUPPLY LTD.

P.O. BOX 5158, L.C.D. 1, HAMILTON, ONTARIO L8L 8G1



## CENTRAL RAIL NEW AND RELAY RAIL MINING RAIL & SWITCHWORK JOINT BARS / TRACKBOLTS FASTENERS

[www.centralrailsupply.com](http://www.centralrailsupply.com)

Tel: (905) 521-8477 - Fax: (905) 529-7912

Email: [info@centralrailsupply.com](mailto:info@centralrailsupply.com)

### DRILLS & GRINDERS

6" x 18"	CHEVALIER, Manual Feeds, 19" Long, 7" Cross, Dust Collector Unit, 2 Hp, 575 Volt	SM
6" x 18"	EQUIPTOP, Manual Feeds, 19" Long, & 7" Cross Travel, 1-1/2 Hp, 575 Volt	SM
6" x 78"	HM, Model TAS 150, Angle, Belt, 5HP, 550V	SM
ERLO DRILL	1-1/8", TCA 32, Automatic Down feed, Pre-owned	WM

### FEEDER, ELECTRONIC ROLL TYPE

12" X 0.125"	MECON Servo Feed, # 250F12, c/w pull thru straightener & floor base, Pre-owned	WM
12" X 0.150"	MECON Servo Feed, # 325F12 c/w pull thru straightener, floor base, Pre-owned	WM

### FOLDING MACHINES

10' x 1/8"	RAS CNC Folder, Model 73.30 FlexiBend, 2008, Pre-owned	WM
------------	--	----

### IRON WORKERS

38 ton	FABMASTER, Punch, 12" throat, New, 575/3/60	WM
55 ton	FABMASTER, 4" angle, 12" flat, 1-1/4" bar, New, In Stock	WM
60 ton	FABMASTER, Punch, 12" throat, New, Stock	WM
60 Ton	Marvel 60 Ton, Model MSIW60D - IN STOCK	EMP
66 ton	FABMASTER, 4" angle, 14" flat, 1-1/2" bar, brake, New, Stock	WM
66 ton	FABMASTER, 5" angle, 14" flat, 1-1/2" bar, New, Stock	WM
88 ton	FABMASTER, 6" angle, 18" flat, 1-3/4" bar, New, Stock	WM
88 ton	FABMASTER Punch, 20" throat, New, Stock	WM
110 ton	FABMASTER, 6" angle, 24" flat, 1-3/4" bar, New, Stock	WM
135 ton	FABMASTER, 6" angle, 24" flat, 2" bar, New	WM
135 ton	FABMASTER, 6" angle, 24" flat, 2" bar, Pre-owned, in-stock	WM
180 ton	FABMASTER, 8" angle, 30" flat, 2-1/4" bar, New, Stock	WM
180 ton	Durma Ironworker, Model 165/300, 8" x 8" x 5/8" Angle, 29" x 3/4" Flat shear, 2013, Pre-owned	WM

### LASERS

ALPHA LAZER	Prime Series 3015, 4020 & 6025, 5' x 10' - 8' x 20'	EMP
ALPHA LAZER	Pro Series Fiber Laser, 5' x 10' - 8' x 40'	EMP

### NOTCHERS

CORNER NOTCHING DIES	- Various Sizes and Capacities in stock	SM
DIACRO,	16 GAUGE X 6" X 6" - DIACRO, Manual Notcher, on stand	SM
HACO	Pre-owned 1/4" 90 Degree Fixed Angle Hydraulic Notcher	EMP
RMD-BAILEIGH	3" Tube Notcher, TN800	WM
PROMECAM	Variable Angle Notcher, Versa 206, 8" x 8" x 6mm Cap., Pre-owned	WM

### PLASMA TABLES

EMPRO	STOCK - 10 Ga 90 Degree Fixed Angle Hydraulic Notcher	EMP
MACHITECH	STOCK - Machitech Silver Cut Plasma Tables c/w Pmax 85	EMP
5 X 10	Multicam, Plasma 3000, Hypertherm XPR 300, with water table, new 2020, Pre-owned	WM

### PRESSES

1/2 ton	EMG (NEW), Manual Impact Press, 1" Stroke, 0.008" Impact Stroke	SM
1-1/2 ton	EMG (NEW), Manual Toggle Press, 2.4" Stroke, 9.85" Shut Height	SM
2 ton	AZIMUTH, OBI, Bench Model, 1" St, 4-5/8" SH, Mechanical, 1/3 Hp, 110 Volt	SM

### PRESSES

3 ton	MANUAL ARBOR PRESS, 5-1/2" Thrt 12-1/2" Open Height, On Stand	SM
3 1/2 ton	ALCECO, OBI, 1-1/4" St, 5-3/4" SH, Bench Model, 1/4 Hp, 110 Volt	SM
4 ton	ALCECO, OBI, 1-1/4" St, 5-3/4" SH, 1/3 Hp, Bench Model, 1/2Hp, 110 Volt	SM
4 ton	ALCECO, OBI, 4-8DT, 8" Throat, 1-1/4" St, Mech Clutch, 1/3 Hp, 208/230/460 Volt	SM
4 ton	AZIMUTH, OBI, 4-DT12, 12" Throat, 1-1/4" St, 5-3/4" SH, 1/3 Hp, 110 Volt	SM
5 ton	WHITNEY JENSEN, Kick Press, 24" Deep Throat, Floor Model	SM
10 ton	ALCECO, OB, 12" Deep Throat, 1-3/4" St, 6-3/4" SH, Mech. Clutch, 1 Hp, 550 Volt	SM
12 ton	ALVA ALLEN, OBI, 1-3/4" St, 8" SH, Mech Clutch, Floor Standing, 3/4 Hp, 550 Volt	SM
20 ton	BLOW, OBI, 2" St, 7-3/4" SH, Mech. Clutch, 1 Hp, 550 Volt	SM
20 ton	BROWN BOGGS, 2" Stroke, 11" x 20" Bed, Mechanical Clutch, 1-1/2 Hp, 550 Volt	SM
22 ton	NIAGARA, OBI, 2" St, 8-3/4" SH, Air Act. Mech Clutch, Palms, Foot Pedal	SM
28 ton	BROWN BOGGS, OBI, 2-1/2" St, 6-3/4" SH, Mech. Foot Pedal, 2 Hp, 550 Volt	SM
28 ton	BROWN BOGGS, OBI, 2-1/2" St, 6-3/4" SH, Air Act Mech Clutch, 2 Hp, 550 Volt	SM
30 ton	BROWN BOGGS, OBI, 2-1/2" St, 9" SH Over Bed, Mechanical Clutch, 2 Hp, 550 Volt	SM
30 ton	BROWN BOGGS, OBI, 2-1/2" St, 6-3/4" SH, Air Act Mech Clutch, 2 Hp, 550 Volt	SM
35 ton	PERKINS, OBI, 2" St, 10" SH, Air Act. Mech Clutch, Foot Pedal, 3 Hp, 460/3/60 Volt	SM
44 ton	ALCECO, OBI, 3" St, 10" SH, 28" x 18" Bed, Mech. Clutch, 3 Hp, 550 Volt	SM
60 ton	BROWN BOGGS, 17.5 IJA, 5" str. Air clutch, light curtains, 86 SPM, Pre-owned	WM
66 ton	SEYI SN1-66S, new	WM
121 ton	SEYI SN1-121, new	WM

### PRESS BRAKES

ELECTRIC CNC PRESS BRAKE (NEW) - COASTONE (MADE IN FINLAND SINCE 2001), NEW	SM
ELECTRIC CNC 2 D GRAPHIC CONTROLS, 34" X 25 TON TO 13 FT X 165 TON, 3 AXIS TO 7	
AXIS LASER GUARDS, SERVO DRIVE BALL SCREWS TO RAM WITH ENCODERS, CNC	
RAM CROWNING (STANDARD ON ALL MACHINES OVER 6 FT), 550 VOLT, PSR READY,	

### TRAINING & INSTALLATION

BOLSTER For Press Brake - 12' L x 2-1/2" H x 3" W, 1/2" Top Slot c/w Grub screws, Tang On Bottom	SM	
40 ton x 4'	MITSUBISHI, Servo Electric Press Brake	EMP
65 ton x 8'	PIRANHA- ALLSTEEL, Hydraulic, machined for Angles, Pre-owned	WM
140 ton x 8'	Wysong, 7 axis CNC, Pre-owned	WM
148 ton x 10'	EMPRO Hydraulic Press Brake	EMP
110 ton x 10'	SAFAN E-Brake, new in stock	WM
132 ton x 10'	BAYKAL, 5 axis + crowning, tooling, safety lights, stock	WM
140 ton x 10'	SAFAN E-BRAKE ULTRA, New, In Stock	WM
176 ton x 10'	BAYKAL, 7-axis+ crowning, tooling, safety lights, stock	WM
176 ton x 12'	BAYKAL, 5 axis+crowning, tooling, safety laser beams, stock	WM
220 ton x 12'	SAFAN E-BRAKE, new in stock	WM
242 ton x 12'	EMPRO - Hydraulic Press Brake - In Stock	EMP
264 ton x 12'	BAYKAL, 5 Axis @ CNC crowning, Safety Laser Beams, Pre-owned	WM

### PUNCHING MACHINES

"C" PUNCHES, STRIPPIT & UNIPUNCH- All Sizes - Over 100 - boxes of punches & dies - all sizes	SM
--	----

# POWERMASTER MACHINERY LTD.

Your One-Stop Shop for  
Manual and CNC Equipment

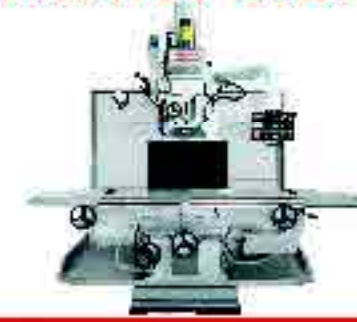
Flux LC-20V56 MINI 3Hp/90 Inper c/w DDB  
MLO MILL, B-6 c/w DDB  
Hobbit Vort/Hor MILL, 40 Taper  
Tos FALCON Hor MILL, 40 Taper  
KI Heavy Bed MILL  
Farnsworth Bed MILL  
Gullon (Horn Type MILL) c/w 3 axis DDB

### USED MACHINES

Emo 4" Bedded 10" x 5MT  
Berglund TMS 5" Radial Drill  
Poboda 1075 5" Radial Drill  
Sharp 107600 - Radial Drill  
East USAJET 1000 Lathe, 3" Bore c/w DDB  
Sharp 16" x 61" Lathe  
MO LEE Model S714 Manual Surface Grinder (fits & no chuck)  
Dale T16 Vertical Band Saw

## MAXIMART BED MILL

### BLOW OUT SPECIALS



**"SPECIAL PRICES"**  
MAX-85IV - 47" x 23" x 24" Travel  
7-1/2 HP Inverter Head

### MAXIMART VERTICAL TURRET MILLING MACHINES

**FULL STOCK:**  
2V5-9" x 49" - RB - 3HP  
2V5-10" x 54" - RB - 3HP  
4V5-10" x 54" - 15A40 - 5HP



### HEAVY DUTY LATHES MORTON - ECOCA - POWERTURN

25" x 120" x 4" Bore  
16" Wide Bed,  
Also Stocking:  
14", 16", 18",  
20" & 22" Swing



### BARON-MAX CNC TEACH-IN LATHES

FULL RANGE with  
Fagor CNC Control



### BARON-MAX MACHINING CENTRES

FULL RANGE  
Fagor CNC Control



### PROTH SURFACE GRINDERS

FULL RANGE



### PHOEBUS HORIZONTAL - VERTICAL MILLING MACHINES

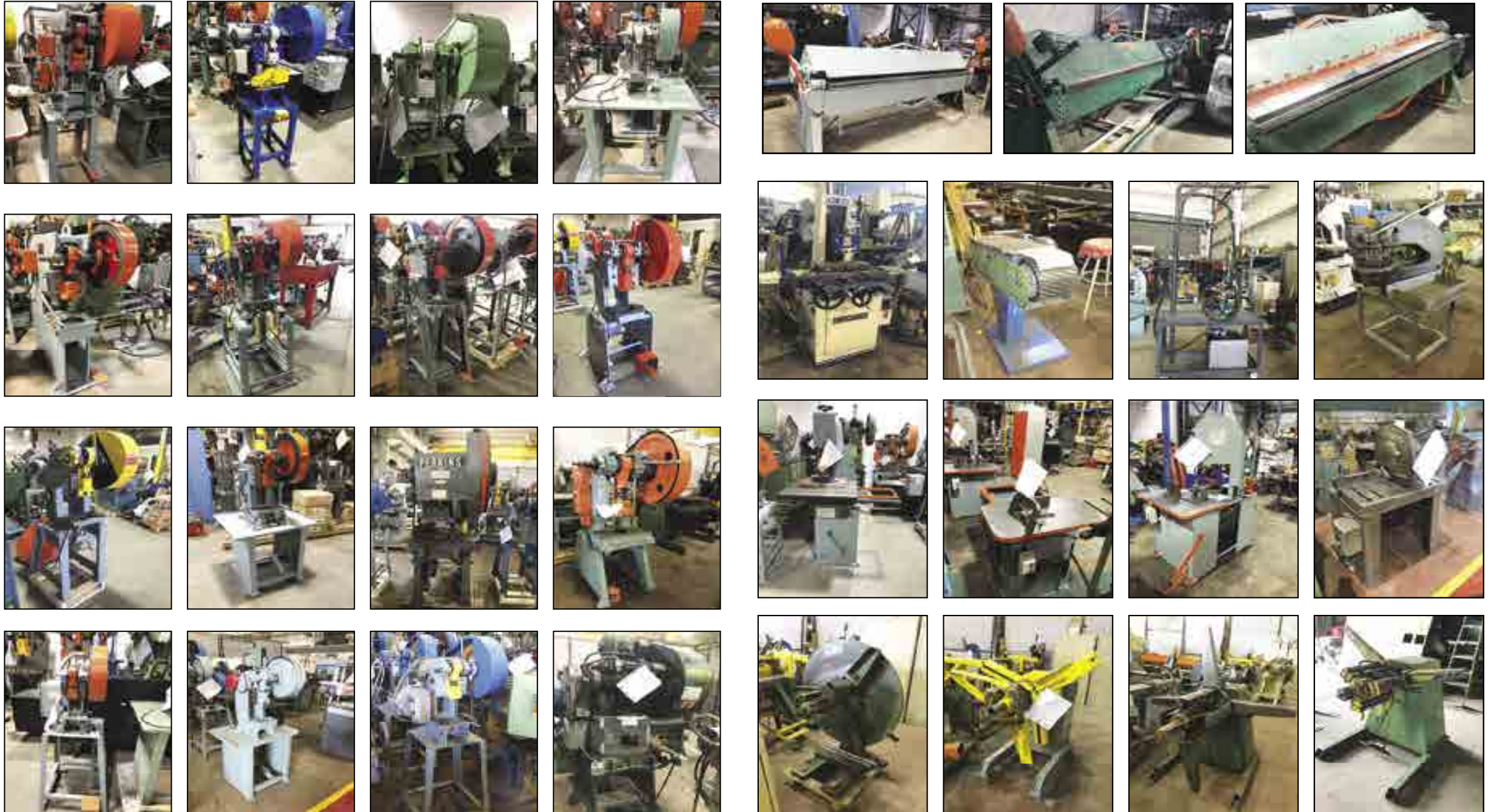
PHH-6V300A  
VARIABLE SPEED



**POWERMASTER MACHINERY LTD.**  
4085 Steelesview Crescent, Unit 7 & 8, Mississauga, ON L4L 5G5  
Tel: 905-624-9327 Fax: 905-624-8591  
[sales@powermaster.ca](mailto:sales@powermaster.ca) [www.powermaster.ca](http://www.powermaster.ca)

**STEVENS MACHINERY**  
Sales Inc.

26 Airview Road, Unit #A, Etobicoke (Toronto) ON, M9W 4P2  
Ph: 416-798-3611 • TF: 1-866-798-3611 • Email: [andrew@stevensmachine.com](mailto:andrew@stevensmachine.com)  
**[www.stevensmachine.com](http://www.stevensmachine.com)**



**ALL ITEMS SHOWN ARE IN STOCK AND AVAILABLE FOR IMMEDIATE DELIVERY**

### Oblong Punches and Dies



**Press Brake Louver Tools**  
Capacity to 12GA Stainless

Punch Cross Reference Table						
Punch Tools	CST	CPD	AP	GF	Mechant	Piranha Mubea
I116	219	F16	119	37		DH H1
I20	221	F20	121	40		EA H2
I26	228	F26	128	45		EF

Die Cross Reference Table						
Punch Tools	CST	CPD	AP	GF	Mechant	Piranha Mubea
I55	413	F55	313	81		JB H1
I59	417	F59	317	82		JC H2
I62	419	F62	319	85		JF

**KEYWAYS & WHISTLE STOPS**  
FURNISHED UPON REQUEST!

**3" Louver Tool \$850**  
3" 1/4" 1/2" in Stock

For a video demonstration and more information go to:  
<http://punchtools.com/louwer>

To view our complete Oblong Stock List go to:  
<http://punchtools.com/ironworker>

**Punch Tools Inc.**  
Proudly Made in Canada by Punch Tools

Toll Free: 1.800.668.4996 • Website: [www.punchtools.com](http://www.punchtools.com) • Email: [orders@punchtools.com](mailto:orders@punchtools.com)

# Canada's Premier Online Welding Supply Shop!

**Welders Helper**.com  
welding supplies for less

 Canadian owned and operated.

**WE OFFER THE MOST ITEMS OF ANY CANADIAN ONLINE WELDING SUPPLY SITE.**

- Wires & Electrodes
- Welders Accessories
- Safety
- Abrasives
- Helmets
- Gas Apparatus
- Machines
- Shop All
- Rebates

PUNCHING MACHINES		SAWS	
CLINCHING TOOL, NORLOK, Flange Watson, Portable, Air/Oil Booster Unit, 2 Pieces of 14 Gauge, 110 Volt	SM	Cold Saw SOCO, Automatic, Model 350 FA, 4" Cap., Pre-Owned	WM
ROTEX, 8 ton, 18 Stations, Manual Turret Punch, #18C-2.25, 26" Throat, All Punches & Dies,	SM	Cold Saw HYD-MECH Cold Saw, 370-2CNC, Fully Automatic, 12 Hp, 2017, Pre-owned	WM
<b>ROLLS - ANGLE, PLATE &amp; TUBE</b>		ROLL-IN, Vertical Bandsaw, BAXTER, 115B, 10" x 13" Capacity, 18" x 30" Table, 3/4 Hp Motor, 110 Volt	SM
1.5" x 3/16" SAHINLER, Angle Roll, PK-30, New	WM	ROLL-IN, Vertical Bandsaw, E.R. MAIER, KM1012, 10" x 12" Capacity, 18" x 30" Table, 1 Hp Motor, 110 Volt(3)	SM
2" x 1/4" SAHINLER, Angle Roll, HPK-35, new	WM	ROLL-IN, Vertical Bandsaw, VERTICUT, 115B, 10" x 13" Capacity, 18" x 30" Table, 3/4 Hp Motor, 110 Volt	SM
2" x 1/4" SAHINLER, Angle Roll, HPK-50, new	WM	Vertical Saw HYD-MECH, V18, 45 Degree tilt L & R, Pre-Owned	WM
2" x 1/4" SAHINLER Angle Roll, HPK-65	WM	<b>SHEARS</b>	
3" x 1/4" SAHINLER Angle Roll, HPK-80	WM	4' x 10 ga SAMPSON, Hydraulic Shear, New, Stock	WM
4" x 3/8" SAHINLER Angle Roll, HPK-100	WM	3' x 16 ga TENNSMITH, Foot Shear, New, In Stock	WM
60" x 14ga EMPRO, STOCK - 60" x 14 GA, Powered Slip Roller - R-0520H	EMP	4' x 16 ga TENNSMITH, Foot Shear, New, In Stock	WM
60" x 10ga EMPRO, STOCK - 60" x 10 GA, Powered Slip Roller - R-0535H	EMP	4' x 16 ga TENNSMITH, Foot Shear, Pre-Owned	WM
60" x 10ga EMPRO, STOCK - 36" x 22 GA, Powered Slip Roller - R3622E	EMP	4' x 16 ga TENNSMITH Pneumatic Shear, new, stock	WM
60" x 1/4" EMPRO, STOCK- Power Slip Roller - R-0570H	EMP	4' x 16 ga TENNSMITH Hydraulic Shear, new, stock	WM
4' x 16ga TENNSMITH powered Slip Roll, new,	WM	4' x 16 ga SAMPSON Foot Shear, Pre-owned	WM
4' X 10ga. SAHINLER Plate Roll	WM	50" x 16 ga EDWARDS, Pneumatic Shear, Pneumatic Foot Pedal, Pneumatic Hold Downs	SM
4' X 1/8" Sahinler, MSM 1270 x 100, 4" O.D. Rolls, 2022, As new, pre-owned	WM	10' x 16 ga SCHECHTL, SMT 3100 - Electro-Mechanical Shear - IN STOCK	EMP
5' x 3/16" SAHINLER Roll	WM	10' x 14 ga ROPER WHITNEY - Pre-owned 10M14, Electro-Mechanical Shear	EMP
5' x 1/4" SAHINLER, Hydraulic Roll, New	WM	10' x 14 ga TENNSMITH LM1014F, Shear, New	WM
10' x 5/16" SAHINLER, HYDRAULIC, 4 ROLL, Model 4R HS 30-260	WM	10' x 1/4" BAYKAL Hydraulic Swing Beam Shear, new, stock	WM
<b>SAWS</b>		10' x 14 ga TENNSMITH LM1014F, Shear, New	WM
Band Saw Vertical, KBC, 18" Throat, Blade Welder, Var. Speeds, 23" x 17" Table, 2 Hp, 220/60/1 Volt	SM	10' x 1/4" EMPRO Hydraulic Shear	EMP
Band Saw Vertical, FRIGGI, 20" TH, BLD Welder, Var. Speeds, 27" x 27" TBL, Coolant, 10" Blade Hight	SM	10' x 1/4" BAYKAL Hydraulic Swing Beam Shear, new, stock	WM
Band Saw HYD-MECH DM-10, 9-3/4" round cap., new, stock	WM	10' x 1/4" Haco, Hydraulic, Model TS 3006, Mot. Back Gauge, 110" Squaring Arm, Pre-owned	WM
Band Saw HYD-MECH Saw, S20M, 13" cap. round, new, stock	WM	10' x 3/8" BAYKAL Hydraulic, CNC, Guillotine Shear, 2021, Rear Sheet Support, pre-owned, stock	WM
Band Saw HYD-MECH Saw, S20P, 13" cap. round, new, stock	WM	10' x 1/2" BAYKAL Hydraulic Shear, MGH 3113, new, stock	WM
Band Saw HYD-MECH Saw, S20P, "cap. round, Pre-Owned, 2018, stock	WM	12' x 1/4ga WYSONG, Hydraulic, 36" CNC B Gauge, Sq. Arm, Two Sup. Arms, 20 Hp, 550 Volt - SPECIAL PRICE!	SM
Band Saw HYD-MECH Saw, S20A, automatic feed, 13" cap., new, stock	WM	52" x 14 ga EMPRO Hydraulic Shears, H5214- 220/1, 220/3, & 575/3 Phase	EMP
Band Saw HYD-MECH Saw, S23A, automatic feed., new in stock	WM	52" x 10 ga EMPRO Model H5210- Hyd. Shears; 220/1, 220/3, & 575/3 Phase	EMP
BAND SAW, Vertical, T-JAW, Md 700D, 28" Thr, 29" x 27" Table, Blade Welder & Grinder, 2 Hp, 550 Volt	SM	60" x 14 ga EMPRO, Model H6014 - 60" x 14 Ga Hydraulic Shears	EMP
Band Saw 1600-ELLIS Bandsaw, 10" Round @ 90 degrees, STOCK	EMP	<b>SHEET METAL EQUIPMENT</b>	
Band Saw ELLIS, Model 1800, Mitering Bandsaw, STOCK	EMP	FLAGLER 20ga. Pittsburg Machine, new, stock	WM
Band Saw Model 2000 Mitering Bandsaw - STOCK	EMP	FLAGLER 24ga. Junior Pittsburg Machine, new, stock	WM
Band Saw Hyd-Mech, Pre-owned S23 Horizontal Bandsaw	EMP	VICON S and Drive cleat rollformer, with pittsburg rolls and 4-1 rolls and slitter, NEW	WM
Radial Arm Saw DEWALT, 18" Carbide Tipped Blade, 26" Travel, 5 Hp Motor, 575 Volt	SM	VICON 20ga., Snap Lock Button Punch, new stock	WM
COLD SAW DELTA, 10" Blade, Aluminium, Drip Coolant, 48" Infeed/Outfeed Extensions, 5 Hp Motor, 575 Volt	SM	LOCKFORMER Band Saw, Model 24S, Pre-owned	WM
Cold Saw ELUMATEC High Speed Saw, 15" blade, for aluminum	WM	ROPER WHITNEY Pexto, Model 3617 Swager, 18Ga, Pre-owned	WM
Cold Saw SOCO, 11" blade, manual, new, stock	WM	Pipe Groover Seamer, 48" motorized, Pre-owned	WM
Cold Saw SOCO, 12-1/2" blade, manual, new, stock	WM	MORLIN 24Ga. Lockforming machine "Porta Pitts", with stand, Pre-owned	WM
Cold Saw SOCO, 14- 1/2" blade, manual, New, Stock	WM	ROTEX Manual Turret Punch on stand, 18 stations (2), Pre-owned	WM
Cold Saw SOCO, 14-1/2" blade, fully automatic CNC, new, stock	WM	EMPRO STOCK - 10 Ga Rotary Machine c/w Hydraulic Top Shaft Control	EMP
Cold Saw MEP, 14" Blade, Tiger 350 SX, Semi Automatic, Pre-Owned.	WM		



**PROMO CODE: Use SM5 for 5% Off**

**www.WeldersHelper.com**

**SHEET METAL EQUIPMENT**

EMPRO	STOCK - EMT-7R Power Rotary Machine	EMP
EMPRO	STOCK - 25, 35, and 50 KVA Spot Welders - STOCK	EMP
LOCKFORMER	STOCK - Pre-owned 18 Ga Pittsburgh Rollformer	EMP
LOCKFORMER	STOCK - Pre-owned 20 Ga Pittsburgh Rollformer	EMP
FLAGLER	STOCK - Pre-owned 1" S-LOCK ROLLFORMER	EMP
SCHECHTL	STOCK - UKV 150, 5' Box & Pan Brake	EMP
FALLS	STOCK - Pre-owned Mo. 131 Falls Deburring Machine	EMP

**TUBE BENDERS & MACHINERY**

MCB	650, flat bar bender, 2"x1/4", 7 sets of tools	WM
FABMASTER	Horizontal hydraulic, HBM-45, 45 tons	WM
RMD 100	manual, bender, 1" sched 40 pipe, 1-3/4" tube,	WM
RMD 150,	hydraulic, 110/1/60, 2"sch40 pipe, 2-1/2"tube,	WM
RMD 250	Electric, 220/1/60, 2" sch40 pipe, 2-1/2" tube	WM
RMD 325	Electric, 220/1/60, 2"sch80 pipe, 3"tube, programmable,	WM
SOCO	Tube Bender, CNC, SB 39 Auto, 1-1/2"cap.	WM
SOCO	Tube Bender, CNC, SB 63 Auto, 2-1/2"cap., In Stock	WM
SOCO	Tube Bender, CNC, SB 63 Auto, 2-1/2"cap., Pre-owned, In Stock	WM
ADDISON MCKEE	Tube End former, Model FM-150ER, 6" Capacity, 2006, Pre-owned	WM

**WELDING EQUIPMENT**

Spot Welder	25 KVA, WELDOMATIC, Spot Welder, 18" Throat, Welltronic Decade 5 Control, Air Foot Pedal, 550 Volt	SM
Spot Welder	18 KVA, REX, 14" Arms, Water Cooled Tips, Mech. Treadle, 550 Volt	SM
Spot Welder	15 KVA, WELDOMATIC, 7-1/2" Arms, Water Cooled Tips, Mech. Treadle, 550 Volt	SM
Wirefeeder	FRONIUS, VR1500, Robotic, 4 Roller Drive, Digital Controlled For 3 rd Axis, New	SM

**MISCELLANEOUS EQUIPMENT**

Air Compressor	- 10 HP, 80 Gallon Horizontal Tank, Two Stage Piston Vee Head, 550 Volt	SM
Air Compressor	- 15 HP, 120 Gallon Hor. Tank, Two Stage Piston Vee Head, 550 Volt	SM

**ANGLE/CHANNEL/FLAT/ROUNDS/SQUARES/EXP METAL/ PLATE**

106 pcs	Angle 1 3/4 x 1 3/4 x 3/16 x 3.833'	SALIT STEEL
110 pcs	Angle 1 3/4 x 1 3/4 x 3/16 x 4'	SALIT STEEL
40 pcs	Angle 2 x 2 x 3/8 x 14'-3"	SALIT STEEL
22 pcs	Angle 3 x 2 x 1/4 x 8.083'	SALIT STEEL
99 pcs	Angle 3 x 2 x 1/4 x 16'	SALIT STEEL
22 pcs	Angle 3 x 2 1/2 x 3/8 x 6'-4" to 6'-8"	SALIT STEEL
27 pcs	Angle Angle - 4 x 3 x 1/4 x 5.75'	SALIT STEEL
46 pcs	Channel - 3 x 5 x 8'	SALIT STEEL
36 pcs	Channel - 12 x 25 x 8' to 8.25'	SALIT STEEL
2 tons	Flat Bar 5/16 x 2 1/4 x 20'	SALIT STEEL

**ANGLE/CHANNEL/FLAT/ROUNDS/SQUARES/EXP METAL/ PLATE**

36 pcs	Channel - 12 x 25 x 8' to 8.25'	SALIT STEEL
2 tons	Flat Bar 5/16 x 2 1/4 x 20'	SALIT STEEL
4 tons	Flat Bar - 5/16 x 2 1/2 x 20'	SALIT STEEL
3 tons	Flat Bar 5/16 x 3 1/2 x 20'	SALIT STEEL
1 ton	Flat Bar 5/8 x 2 x 20' - no MTR's	SALIT STEEL
2 tons	Flat Bar 5/8 x 1 x 20'	SALIT STEEL
2 tons	Flat Bar 1 x 7 x 20'	SALIT STEEL
2 tons	Flat Bar 1 1/4 x 5 x 20'	SALIT STEEL
28 pcs	Round Bar - 1 3/8" rds x 15'	SALIT STEEL
6 pcs	Plate - 1 1/4" x 96 x 240 - 50W	SALIT STEEL
3 pcs	Plate - 2" x 96 x 240 - 50W	SALIT STEEL
6 pcs	AR Plate - 3/16 x 96 x 288 - AR400	SALIT STEEL
9 pcs	1" - 12F Expanded Metal 48 x 96	SALIT STEEL
40 pcs	34" - 16F GALV. Exp Metal - 34 x 74.5	SALIT STEEL

**PIPE**

194 pcs	1 1/2" sch 40 x 21' - A53B, Threaded and Coupled	SALIT STEEL
129 pcs	1 1/2" sch 40 x 21' - A53B, Threaded and Coupled	SALIT STEEL
25 tons	2-1/2 sch 5 pipe, coated, x 21'	SALIT STEEL
10 ton	2-1/2 sch 10 pipe, bare, x 21'	SALIT STEEL

**TUBE AND PIPE**

14 pcs	8" od x .375 x 48' - Painted Black	SALIT STEEL
1 pc	10" od x .625 x 12.583' - A500C	SALIT STEEL
8 pcs	8 x 3 x .250 x 48' - rusty, no MTR's,	SALIT STEEL
33 pcs	8 x 3 x .375 x 24' - rusty, no MTR's	SALIT STEEL
9 pcs	8 x 3 x .500 x 24' - rusty, no MTR's	SALIT STEEL
3 pcs	8 x 8 x .500 x 48' - rusty, no MTR's	SALIT STEEL
8 pcs	12 x 4 x .250 x 29' - A500C	SALIT STEEL
17 pcs	12 x 8 x .250 x 55.667' - A500C	SALIT STEEL
1 pcs	14 x 4 x .375 x 48' - A500C	SALIT STEEL
1 pcs	14 x 14 x .375 x 20' - A500C	SALIT STEEL
1 pcs	14 x 14 x .500 x 50' - A500C	SALIT STEEL
1 pcs	14 x 14 x .500 x 35.667' - A500C	SALIT STEEL
1 pc	16 x 12 x .500 x 34' - A500C	SALIT STEEL
1 pcs	16 x 12 x .500 x 34' - A500C	SALIT STEEL

**Kubes Steel Quick Reference Chart for 2-Axis Section Rolling and Bending**

**KUBES STEEL**  
WHERE METAL TAKES SHAPE

Canada's Source for:  
Structural Section, Pipe, Plate Rolling and Forming  
Solutions for Architectural, Structural, Manufacturing,  
Mining and Mechanical Process Applications



Contact us:  
930 Arvin Avenue  
Stoney Creek, Ontario  
Canada L8E 5Y8  
Toll Free: 1.877.327.8357  
Telephone: 905.643.1129  
Facsimile: 905.643.4003  
Email: kubes@kubesteel.com  
www.kubesteel.com

**ISO 9001**

Where service is still personal



**AUTOMECH CNC GAUGING FOR PRESS BRAKES**

- FULL NEW CONTROLS
- UPGRADES TO OLD AUTOMECH PARTS & CONTROLS
- CONVERSIONS FROM HURCO TO AUTOMECH CONTROLS



**STEVENS MACHINERY SALES INC.**

26 Airview Road, Unit #A, Etobicoke (Toronto) ON., M9W 4P2  
Ph: 416-798-3611 • TF: 1-866-798-3611 • Email: andrew@stevensmachine.com

## Important Notice:

### Steel Marketplace is Updating it's Mailing List

To ensure you remain on our mailing list, please choose ONE of the following options:

**1. Please complete the form and fax to 905-685-4766.**

**Company Name:** \_\_\_\_\_

**Contact Name:** \_\_\_\_\_

**Street Address:** \_\_\_\_\_

**City:** \_\_\_\_\_ **Prov.:** \_\_\_\_\_ **Postal Code:** \_\_\_\_\_

**Phone:** \_\_\_\_\_

**Email:** \_\_\_\_\_

**Subscribe,**  
Please Check this box.

**Unsubscribe,**  
Please Check this box.

**2. Go Online to: [www.steelmarketplace.com/subscribe-steel-marketplace/](http://www.steelmarketplace.com/subscribe-steel-marketplace/) and complete the online form for subscription updating.**



**STEEL MARKETPLACE**  
12 - 111 Fourth Ave., Suite 8351 St. Catharines, ON L2S 8P5  
Phone: 905-445-4766  
Email: [info@steelmarketplace.com](mailto:info@steelmarketplace.com)  
Website: [www.steelmarketplace.com](http://www.steelmarketplace.com)

**Published Monthly & Distributed Across Canada**

**To Advertise Please Call  
1-800-263-1440**

**Publisher: Colin Kish Design & Layout: Peak Imaging**

To re-direct, cancel or obtain additional copies, please email your request to: [info@steelmarketplace.com](mailto:info@steelmarketplace.com)

**NEXT ISSUE: DECEMBER 2024, CLOSING DATE FOR NEXT ISSUE: NOVEMBER 26, 2024**

All Marketing Publications and Logo Copyright © 2024. All rights reserved. No part of this publication may be reproduced without the express permission of the publisher. The publisher assumes no responsibility for statements or omissions in advertisements.

## NOVEMBER 2024 ADVERTISERS INDEX

COMPANY	PAGE	COMPANY	PAGE
AUTOMEC	12	MYER SALIT	15
CENTRAL RAIL SUPPLY	6	POWERMASTER MACHINERY	7
FABRICATING MACHINERY SOLUTIONS (FMS) FC	FC	PUNCH TOOLS	10
FMS - SLAG HOG	4	STEVEN'S MACHINERY	8-9
KUJES STEEL	13	WELDER'S HELPER	11
MC MACHINERY SYSTEMS, INC.	3	WELDMATIC	2
MACHINE SOLUTIONS	5	WESTWAY MACHINERY	10

# SALIT STEEL

SALIT GROUP OF COMPANIES

## www.salitsteel.com

Salit Steel is made up of an integrated network of companies and partners that together provide a full range of solutions through our Service Centre and Rebar Fabrication Division.

With operations in Ontario, Quebec and Western Canada, we are passionate about delivering outstanding service and value.



### Reinforcing Steel Products



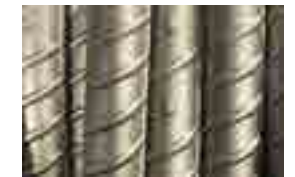
**Black Rebar**



**Mesh Rebar and Rolls**



**Deformed and Smooth Wire**



**Stainless Rebar**



**Modular Rebar**



**Glass Fibre Reinforced Polymer (GFRP)**



**Fabricated Rebar**



**Cold Drawn Wire**

### LOCATIONS TO SERVE YOU:

**HEAD OFFICE NIAGARA**  
7771 Stanley Ave., P.O. Box 837,  
Niagara Falls, ON L2E 6V6  
Head Office: 905-354-5691 • Fax: 905-356-0809  
Toll Free: 1-800-263-7110

**Salit Steel Welland**

90 Centre St., Welland, ON L3B 5N9  
Ph: 905-735-9993 • Fax: 905-735-3955  
Toll Free: 1-866-924-0837

Products: Reinforcing Products (Wire & Mesh), Specialty Products (Assembled Rebar), Service Centre  
Services: Fabrication, Warehousing, Delivery, Detailing, Estimating, Cutting, Welding (CWB)

**Salit Steel Bowmanville**

222 Baseline Rd., Bowmanville, ON L1C 1A4  
Ph: 905-623-5544 • Fax: 905-623-5564  
Toll Free: 1-866-623-5544

Products: Reinforcing Products (Rebar & Mesh), Service Centre, Housing  
Services: Fabrication, Painting, Warehousing, Delivery

**Salti Steel Burlington**

921 Zelco Drive, Burlington, ON L7L 4Y2  
Ph: 905-333-3975 • Fax: 905-333-4510

Products: Reinforcing Product (Rebar)  
Services: Fabrication, Warehousing, Delivery

**Salit Steel Chatham**

35 Ivan Rd., Chatham-Kent, ON N7M 5J4  
Toll Free: 1-866-434-0067

Products: Reinforcing Products (Rebar)  
Services: Fabrication, Warehousing, Delivery

**Salit Steel Concord**

300 Connie Crescent, Concord, ON L4K 5W6  
Ph: 4905-354-5691 • Toll Free: 1-800-263-7110

Products: Reinforcing Products (Rebar)  
Services: Fabrication, Warehousing, Delivery

**Salit Steel Etobicoke**

43 Bethridge Road, Toronto, ON M9W 1M6  
Ph: 416-745-1403 • Fax: 416-745-1227

Products: Reinforcing Products (Rebar), Modular Rebar  
Services: Fabrication, Warehousing, Delivery, Installation

**Salit Steel Fort Erie**

411 Central Avenue, Fort Erie, ON L2E 6X8  
Ph: 905-735-9993 • Fax: 905-991-9884

Toll Free: 1-866-924-0837  
Products: Reinforcing Products (Rebar, Mesh, and Wire)  
Services: Assembly, Rebar Fabrication, Warehousing, Delivery

**Same Day Pick-Up  
or Next Day Delivery**



# FABMaster

## HYDRAULIC IRONWORKERS & PUNCHING MACHINES



Pipe Notching



Angle Beveling



Punching



Blanking off  
Corners



Flare Bevel



Punching



Radius Corner



Pipe Punching



Cutting and  
Blanking off



Notch  
Blanking off



Blanking off



Blanking off



Blanking off



Blanking off



Blanking off



HIGHEST  
QUALITY  
BEST  
VALUE.



Flat Bar Slitting



Angle Metal Slitting



Slit Rolling



Rolling



Rolling



Westway Machinery Ltd.  
[www.westwaymachinery.com](http://www.westwaymachinery.com)

647-308-5985